

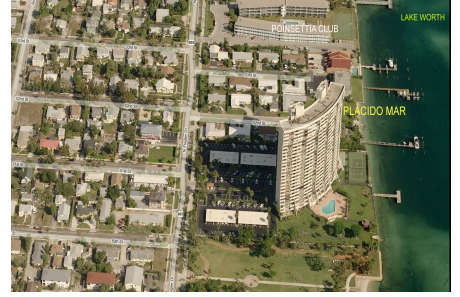
Placido Mar

5200 N Flagler Dr, West Palm Beach, FL, Palm Beach 33407

Building Information

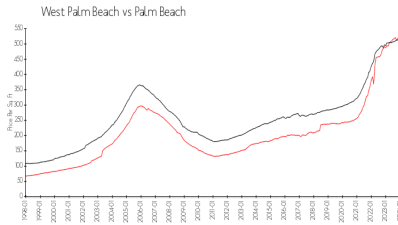
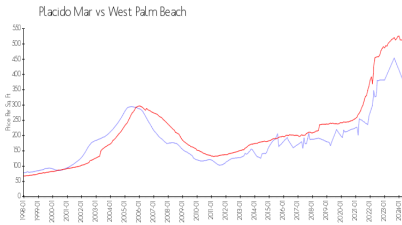
Number of units:	144
Number of active listings for rent:	1
Number of active listings for sale:	7
Building inventory for sale:	4%
Number of sales over the last 12 months:	1
Number of sales over the last 6 months:	0
Number of sales over the last 3 months:	0

Placido Mar Association, Inc
5200 N Flagler Drive # 1505
West Palm Beach, FL33407-2755
(561) 842-3233



Built in 1974 - 144 units - 26 floors

Market Information



Placido Mar: \$384/sq. ft.
West Palm Beach: \$512/sq. ft.

West Palm Beach: \$512/sq. ft.
Palm Beach: \$469/sq. ft.

Inventory for Sale

Placido Mar	4%
West Palm Beach	3%
Palm Beach	3%

Avg. Time to Close Over Last 12 Months

Placido Mar	92 days
West Palm Beach	52 days
Palm Beach	56 days