

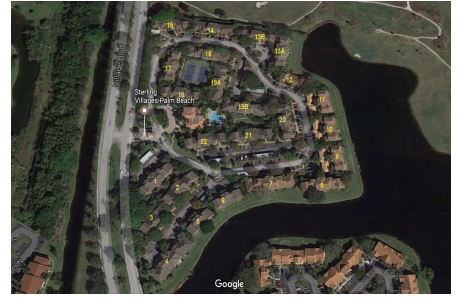
Sterling Villages of Palm Beach Lakes

1101-22304 Glenmoor Dr, West Palm Beach, FL, Palm Beach 33409

Building Information

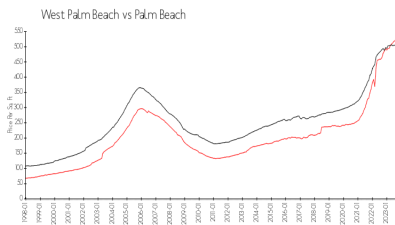
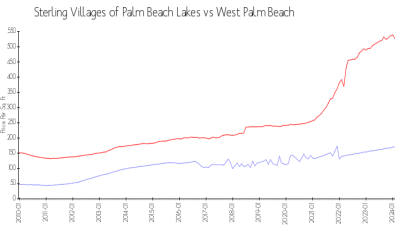
Number of units: 319
 Number of active listings for rent: 8
 Number of active listings for sale: 10
 Building inventory for sale: 3%
 Number of sales over the last 12 months: 20
 Number of sales over the last 6 months: 12
 Number of sales over the last 3 months: 7

Sterling Villages-Palm Beach
 Address: 1100 Village Blvd,
 West Palm Beach, FL 33409,
 Phone: +1 561-471-9292
<http://www.thesterlingwpb.com/>



Built in 1989 - 319 units - 3 floors

Market Information



Sterling Villages of Palm Beach Lakes: \$158/sq. ft.
 West Palm Beach: \$528/sq. ft.

West Palm Beach: \$528/sq. ft.
 Palm Beach: \$453/sq. ft.

Inventory for Sale

Sterling Villages of Palm Beach Lakes: 3%
 West Palm Beach: 3%
 Palm Beach: 3%

Avg. Time to Close Over Last 12 Months

Sterling Villages of Palm Beach Lakes: 36 days
 West Palm Beach: 51 days
 Palm Beach: 55 days