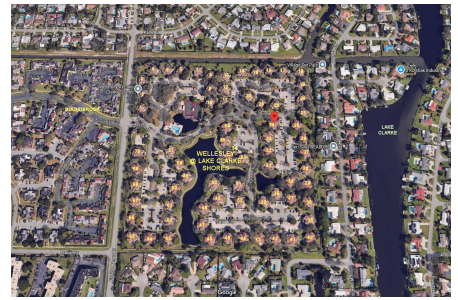


Wellesley at Lake Clarke Shores

8125-8134 Sedgewick Ct, West Palm Beach, FL, Palm Beach 33406

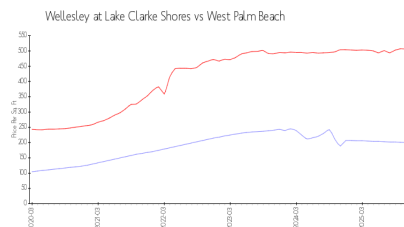
Building Information

Number of units: 280
Number of active listings for rent: 1
Number of active listings for sale: 3
Building inventory for sale: 1%
Number of sales over the last 12 months: 8
Number of sales over the last 6 months: 7
Number of sales over the last 3 months: 7
Wellesley at Lake Clarke Shores
Address: 2600 Florida Mango Rd,
Lake Clarke Shores, FL 33406
Phone: +1 561-641-4067
<https://>

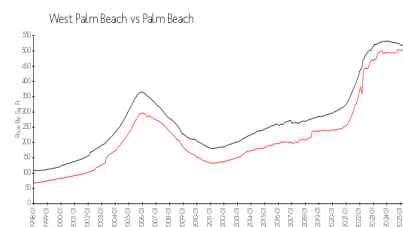


Built in 1988 - 280 units - 1 floor

Market Information



Wellesley at Lake
Clarke Shores: \$200/sq. ft.
West Palm Beach: \$506/sq. ft.



West Palm Beach: \$506/sq. ft.
Palm Beach: \$453/sq. ft.

Inventory for Sale

Wellesley at Lake Clarke Shores 1%
West Palm Beach 3%
Palm Beach 2%

Avg. Time to Close Over Last 12 Months

Wellesley at Lake Clarke Shores 44 days
West Palm Beach 69 days
Palm Beach 77 days