

Santeri Villas at Estancia

4104-4623 Barletta Ct, Wesley Chapel, FL, Pasco 33543

Building Information

Number of units:	96
Number of active listings for rent:	0
Number of active listings for sale:	0
Building inventory for sale:	
Number of sales over the last 12 months:	0%
Number of sales over the last 6 months:	0
Number of sales over the last 3 months:	0

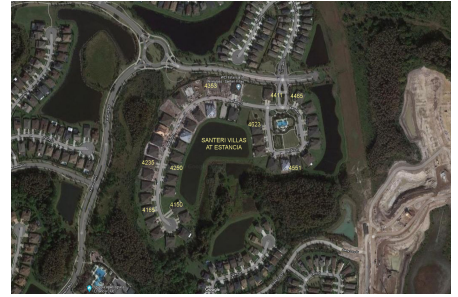
WCI at Estancia

Address: 29242 Picana Ln,

Wesley Chapel, FL 33543

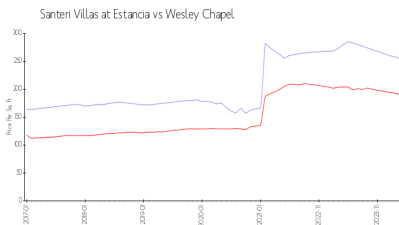
Phone: +1 844-482-8335

<https://estanciawiregrasscdd.com/hoa-information>

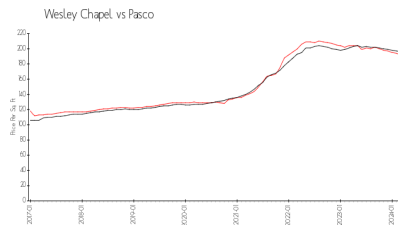


Built in 2018 - 96 units - 2 floors

Market Information



Santeri Villas at Estancia:	\$254/sq. ft.
Wesley Chapel:	\$190/sq. ft.



Wesley Chapel:	\$190/sq. ft.
Pasco:	\$192/sq. ft.

Inventory for Sale

Santeri Villas at Estancia

Wesley Chapel

0%%

Pasco

Avg. Time to Close Over Last 12 Months

Santeri Villas at Estancia	8 days
Wesley Chapel	36 days
Pasco	43 days