

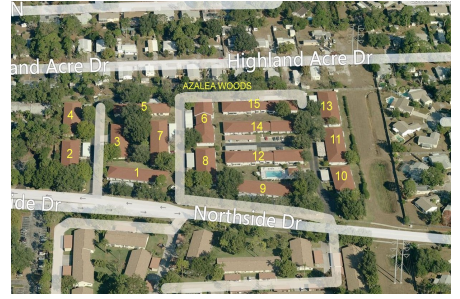
Azalea Woods

3455 Countryside Blvd, Clearwater, FL, Pinellas 33761

Building Information

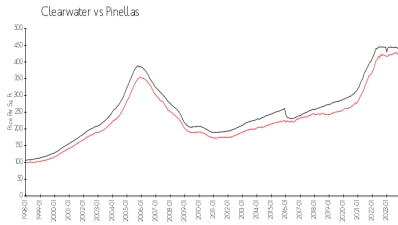
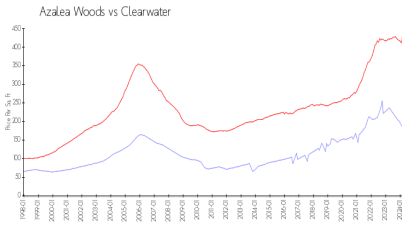
Number of units:	98
Number of active listings for rent:	1
Number of active listings for sale:	2
Building inventory for sale:	2%
Number of sales over the last 12 months:	6
Number of sales over the last 6 months:	4
Number of sales over the last 3 months:	0

Azalea Woods Condominium Association
 3455 Countryside Blvd
 FIRST CHOICE ASSOCIATION MANAGEMENT INC
 4174 WOODLANDS PKWY PALM HARBOR 34685
 PHONE 727-785-8887
 FAX 727-787-5725



Built in 1986 - 108 units - 1 floor

Market Information



Azalea Woods:	\$185/sq. ft.	Clearwater:	\$434/sq. ft.
Clearwater:	\$434/sq. ft.	Pinellas:	\$415/sq. ft.

Inventory for Sale

Azalea Woods	2%
Clearwater	4%
Pinellas	3%

Avg. Time to Close Over Last 12 Months

Azalea Woods	43 days
Clearwater	59 days
Pinellas	60 days