

Weatherly

9415 Blind Pass Rd, St Pete Beach, FL, Pinellas 33706

Building Information

Number of units:	70
Number of active listings for rent:	0
Number of active listings for sale:	3
Building inventory for sale:	4%
Number of sales over the last 12 months:	3
Number of sales over the last 6 months:	1
Number of sales over the last 3 months:	0

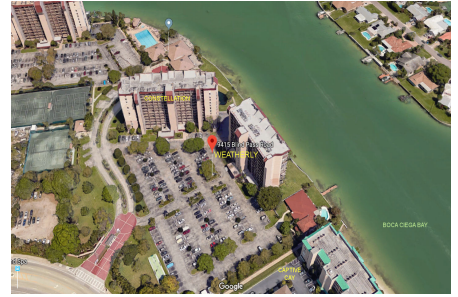
MANAGEMENT OFFICE INFORMATION

Address: 9445 Blind Pass Road,

St. Pete Beach, FL 33706

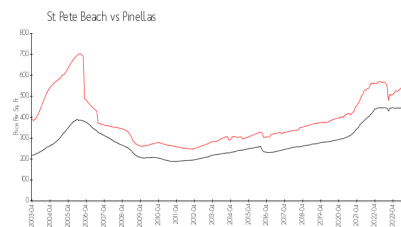
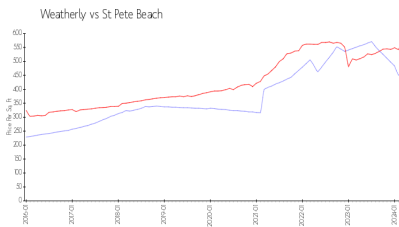
Phone: 727-367-5659

http://www.ytcs pb.com/ytcs pb/outside_home.asp



Built in 1977 - 70 units - 13 floors

Market Information



Weatherly: \$455/sq. ft.
St Pete Beach: \$574/sq. ft.

St Pete Beach: \$574/sq. ft.
Pinellas: \$415/sq. ft.

Inventory for Sale

Weatherly	4%
St Pete Beach	3%
Pinellas	3%

Avg. Time to Close Over Last 12 Months

Weatherly	23 days
St Pete Beach	56 days
Pinellas	60 days