

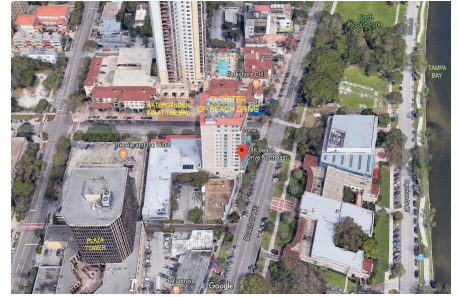
Cloister of Beach Drive

288 Beach Dr NE, St Petersburg, FL, Pinellas 33701

Building Information

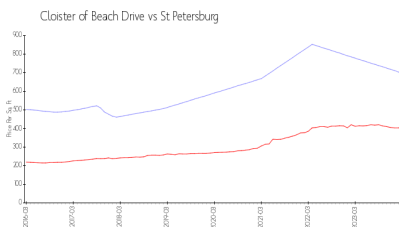
Number of units:	32
Number of active listings for rent:	0
Number of active listings for sale:	2
Building inventory for sale:	6%
Number of sales over the last 12 months:	0
Number of sales over the last 6 months:	0
Number of sales over the last 3 months:	0

Cloisters Of Beach Drive
Condominium Association Inc.
288 Beach Dr NE
St Petersburg FL33701
Phone: (727) 895-3366
<https://www.associationvoice.com/page/253-4108/About-The-Cloisters-on-Beach-Driv>

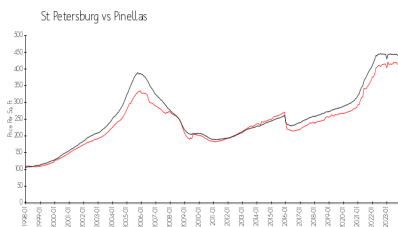


Built in 1999 - 32 units - 14 floors

Market Information



Cloister of Beach Drive: \$698/sq. ft.
St Petersburg: \$409/sq. ft.



St Petersburg: \$409/sq. ft.
Pinellas: \$415/sq. ft.

Inventory for Sale

Cloister of Beach Drive	6%
St Petersburg	4%
Pinellas	3%

Avg. Time to Close Over Last 12 Months

Cloister of Beach Drive	7 days
St Petersburg	65 days
Pinellas	60 days