

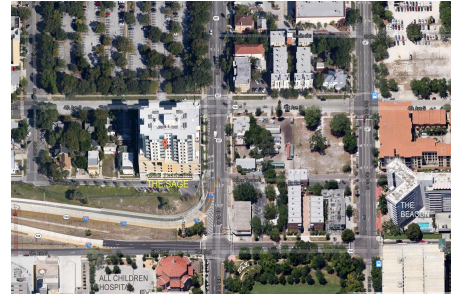
Sage

400 4 Av S, St Petersburg, FL, Pinellas 33701

Building Information

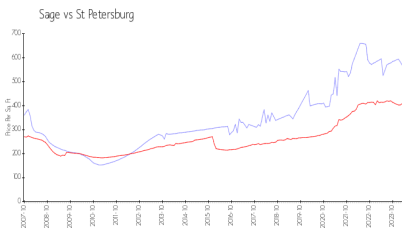
Number of units:	112
Number of active listings for rent:	1
Number of active listings for sale:	3
Building inventory for sale:	2%
Number of sales over the last 12 months:	10
Number of sales over the last 6 months:	5
Number of sales over the last 3 months:	3

The Sage Condo Association
400 4th Avenue S
Saint Petersburg, FL 33701
(727) 823-0176

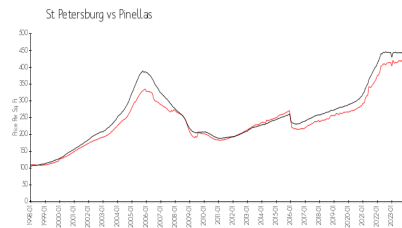


Built in 2007 - 112 units - 12 floors

Market Information



Sage: \$568/sq. ft.
St Petersburg: \$409/sq. ft.



St Petersburg: \$409/sq. ft.
Pinellas: \$415/sq. ft.

Inventory for Sale

Sage	2%
St Petersburg	4%
Pinellas	3%

Avg. Time to Close Over Last 12 Months

Sage	80 days
St Petersburg	65 days
Pinellas	60 days