

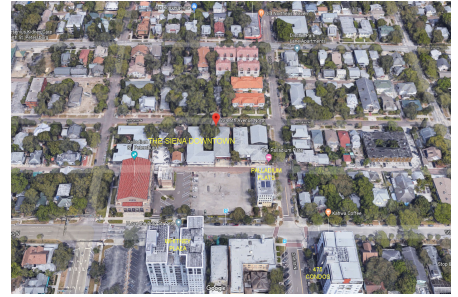
Siena Downtown

210 6 Ave N, St Petersburg, FL, Pinellas 33701

Building Information

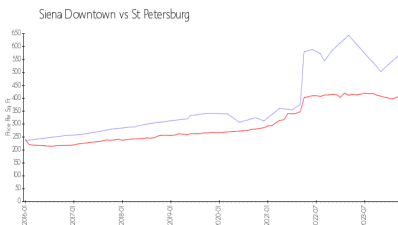
Number of units:	50
Number of active listings for rent:	0
Number of active listings for sale:	2
Building inventory for sale:	4%
Number of sales over the last 12 months:	1
Number of sales over the last 6 months:	0
Number of sales over the last 3 months:	0

Siena Downtown Condominium
210 6th Ave N, Apt 2
Saint Petersburg, Florida 33701
+1 727-822-6200

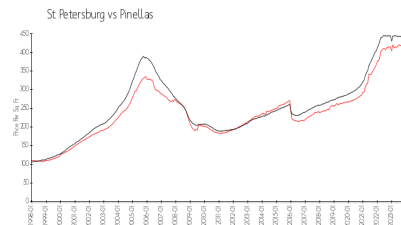


Built in 1961/1973 - 50 units - 2 floors

Market Information



Siena Downtown: \$576/sq. ft.
St Petersburg: \$401/sq. ft.



St Petersburg: \$401/sq. ft.
Pinellas: \$417/sq. ft.

Inventory for Sale

Siena Downtown	4%
St Petersburg	4%
Pinellas	3%

Avg. Time to Close Over Last 12 Months

Siena Downtown	3 days
St Petersburg	65 days
Pinellas	60 days