

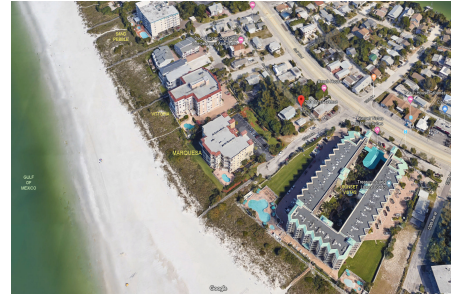
Marquesa

200 121 Ave, Treasure Island, FL, Pinellas 33706

Building Information

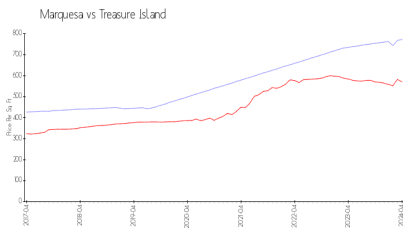
Number of units:	17
Number of active listings for rent:	0
Number of active listings for sale:	2
Building inventory for sale:	11%
Number of sales over the last 12 months:	0
Number of sales over the last 6 months:	0
Number of sales over the last 3 months:	0

Marquesa Condominium Association
Address 200 121st Ave
Treasure Island, Florida 33706
Phone +1 727-363-4831

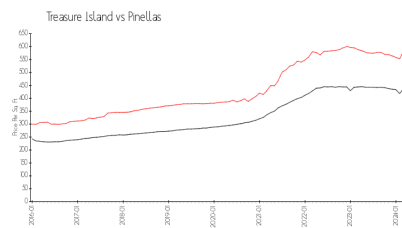


Built in 2000 - 38 units - 4 floors

Market Information



Marquesa: \$772/sq. ft.
Treasure Island: \$570/sq. ft.



Treasure Island: \$570/sq. ft.
Pinellas: \$417/sq. ft.

Inventory for Sale

Marquesa	11%
Treasure Island	5%
Pinellas	3%

Avg. Time to Close Over Last 12 Months

Marquesa	38 days
Treasure Island	71 days
Pinellas	60 days