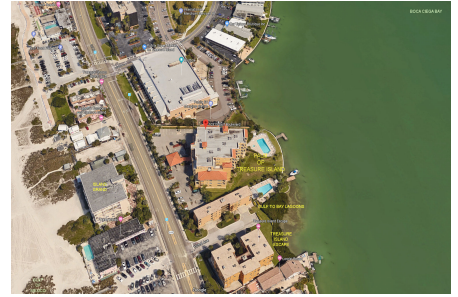


Palms of Treasure Island

10315 Gulf Blvd, Treasure Island, FL, Pinellas 33706

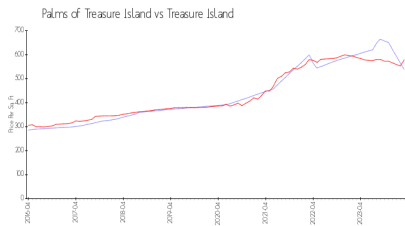
Building Information

Number of units:	36
Number of active listings for rent:	0
Number of active listings for sale:	4
Building inventory for sale:	11%
Number of sales over the last 12 months:	7
Number of sales over the last 6 months:	3
Number of sales over the last 3 months:	2

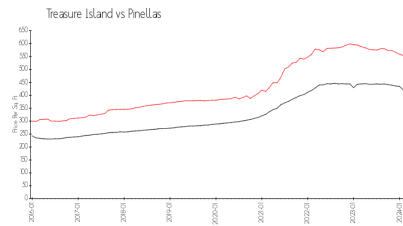


Built in 2008 - 36 units - 4 floors

Market Information



Palms of Treasure Island: \$538/sq. ft.
Treasure Island: \$580/sq. ft.



Treasure Island: \$580/sq. ft.
Pinellas: \$415/sq. ft.

Inventory for Sale

Palms of Treasure Island	11%
Treasure Island	5%
Pinellas	3%

Avg. Time to Close Over Last 12 Months

Palms of Treasure Island	64 days
Treasure Island	73 days
Pinellas	60 days