

Hibiscus by the Sea

3870 N Highway A1A, Fort Pierce, FL, St. Lucie 34949

Building Information

Number of units:116

Number of active listings for rent:2

Number of active listings for sale:7

Building inventory for sale:6%

Number of sales over the last 12 months:7

Number of sales over the last 6 months:6

Number of sales over the last 3 months:5

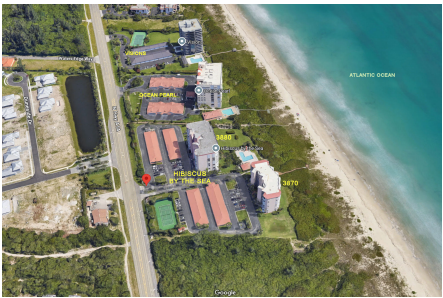
Hibiscus by the Sea

Address: 3880 Jimmy Buffett Mem Hwy,
Fort Pierce, FL 34949

772-234-3005

(772) 234-3005

<https://engage.goenumerate.com/s/hibiscus/>



Built in 1996 - 116 units - 12 floors

Market Information



Hibiscus by the Sea:	\$332/sq. ft.	Fort Pierce:	\$296/sq. ft.
Fort Pierce:	\$296/sq. ft.	St. Lucie:	\$291/sq. ft.

Inventory for Sale

Hibiscus by the Sea	6%
Fort Pierce	3%
St. Lucie	2%

Avg. Time to Close Over Last 12 Months

Hibiscus by the Sea	185 days
Fort Pierce	120 days
St. Lucie	81 days