

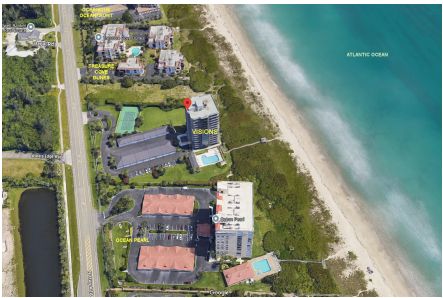
Visions

4000 N Hwy A1A, Fort Pierce, FL, St. Lucie 39949

Building Information

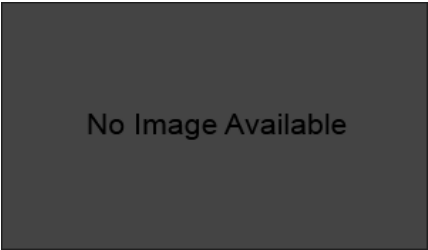
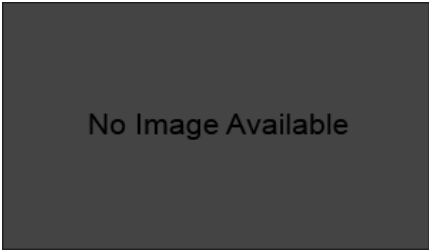
Number of units:	26
Number of active listings for rent:	0
Number of active listings for sale:	1
Building inventory for sale:	3%
Number of sales over the last 12 months:	2
Number of sales over the last 6 months:	0
Number of sales over the last 3 months:	0

Visions
4000 N Highway A1A
Fort Pierce, FL34949
managed by
Elliott Merrill Community Management
Address: 835 20th Pl,
Vero Beach, FL 32960
Phone: +1 772-569-9853
<https://>



Built in 1993 - 26 units - 14 floors

Market Information



Visions:	\$285/sq. ft.	Fort Pierce:	\$296/sq. ft.
Fort Pierce:	\$296/sq. ft.	St. Lucie:	\$291/sq. ft.

Inventory for Sale

Visions	3%
Fort Pierce	3%
St. Lucie	2%

Avg. Time to Close Over Last 12 Months

Visions	376 days
Fort Pierce	120 days
St. Lucie	81 days