

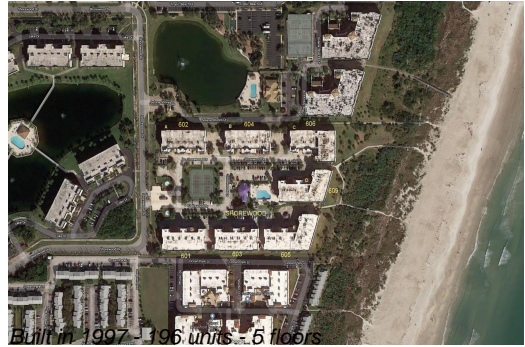
# Unit 602 Shorewood Dr # A305 - Shorewood A-B-C-D-E-F&G

602 Shorewood Dr # A305 - 601 Shorewood Dr, Cape Canaveral, FL, Brevard 32920

## Unit Information

MLS Number: 1007350  
 Status: Active  
 Size: 1,663 Sq ft.  
 Bedrooms: 2  
 Full Bathrooms: 2  
 Half Bathrooms: 2  
 Parking Spaces: Assigned, Attached, Garage, Garage Door Opener, Gated  
 View: Beach, Lake, Ocean, Pond, Other, Protected Preserve  
 List Price: \$569,900  
 List PPSF: \$343  
 Valuated Price: \$482,000  
 Valuated PPSF: \$290

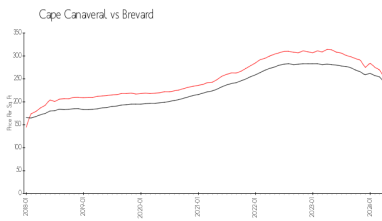
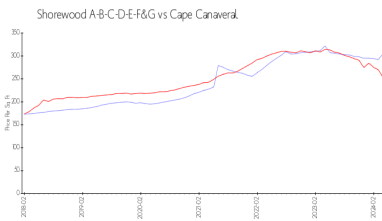
*The above valuated price is a baseline figure that does not take into account any specific renovation, upgrade, split, merge, or deterioration of the unit.*



## Building Information

Number of units: 196  
 Number of active listings for rent: 0  
 Number of active listings for sale: 1  
 Building inventory for sale: 0%  
 Number of sales over the last 12 months: 0  
 Number of sales over the last 6 months: 0  
 Number of sales over the last 3 months: 0

## Market Information



Shorewood A-B-C-D-E-F&G: \$307/sq. ft.  
 Cape Canaveral: \$250/sq. ft.  
 Brevard: \$226/sq. ft.

## Inventory for Sale

Shorewood A-B-C-D-E-F&G: 1%  
 Cape Canaveral: 1%  
 Brevard: 1%

## Avg. Time to Close Over Last 12 Months

Shorewood A-B-C-D-E-F&G: n/a  
 Cape Canaveral: 27 days  
 Brevard: 40 days