

Unit 640 Seaport Blvd # T224 - Villages of Seaport (The)

640 Seaport Blvd # T224 - 100-722 Beach Park Ln, Cape Canaveral, FL, Brevard 32920

Unit Information

MLS Number:	1022269
Status:	Active
Size:	1,120 Sq ft.
Bedrooms:	2
Full Bathrooms:	2
Half Bathrooms:	1
Parking Spaces:	Assigned,On Street
View:	Other
List Price:	\$339,900
List PPSF:	\$303
Valuated Price:	\$313,000
Valuated PPSF:	\$288

The above valuated price is a baseline figure that does not take into account any specific renovation, upgrade, split, merge, or deterioration of the unit.

Building Information

Number of units:	558
Number of active listings for rent:	0
Number of active listings for sale:	7
Building inventory for sale:	1%
Number of sales over the last 12 months:	30
Number of sales over the last 6 months:	16
Number of sales over the last 3 months:	13

Building Association Information

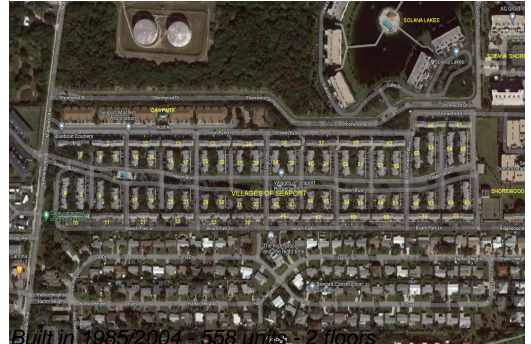
Villages of Seaport
Condominium Assoc.,Inc
Association Manager
(321) 784-6400
(321) 890-4489
Assistant Manager
(321) 784-6400
(301) 643-3924
Admin
(321) 784-6400
Guard
(321) 783-8046

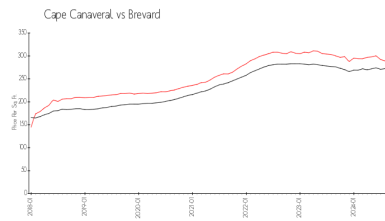
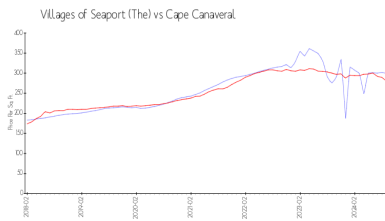
<https://www.myvos.org/>

Recent Sales

Unit #	Size	Closing Date	Sale Price	PPSF
150	703 sq ft	Oct 2024	\$230,000	\$327
	1,014 sq ft	Sep 2024	\$300,000	\$296
V94	928 sq ft	Sep 2024	\$100,000	\$108
V18	640 sq ft	Sep 2024	\$52,000	\$81
T127	1,110 sq ft	Sep 2024	\$133,000	\$120
V182	925 sq ft	Sep 2024	\$105,000	\$114
314	1,110 sq ft	Sep 2024	\$130,000	\$117
T248	1,375 sq ft	Sep 2024	\$200,000	\$145
107	1,014 sq ft	Sep 2024	\$300,000	\$296
V17	640 sq ft	Sep 2024	\$96,400	\$151
	925 sq ft	Sep 2024	\$190,000	\$205
T35	1,510 sq ft	Sep 2024	\$305,000	\$202

Market Information





Villages of Seaport (The): \$299/sq. ft.
Cape Canaveral: \$280/sq. ft.

Cape Canaveral: \$280/sq. ft.
Brevard: \$255/sq. ft.

Inventory for Sale

Villages of Seaport (The) 1%
Cape Canaveral 2%
Brevard 2%

Avg. Time to Close Over Last 12 Months

Villages of Seaport (The) 83 days
Cape Canaveral 70 days
Brevard 306 days