

# Unit 611 - Sandpiper Towers

611 - 205 Hwy A1A, Satellite Beach, FL, Brevard 32937

## Unit Information

MLS Number: 1028794  
 Status: Active  
 Size: 1,047 Sq ft.  
 Bedrooms: 1  
 Full Bathrooms: 1  
 Half Bathrooms: 0  
 Parking Spaces: Off Street, Parking Lot  
 View: Beach  
 List Price: \$428,500  
 List PPSF: \$409  
 Valuated Price: \$304,000  
 Valuated PPSF: \$382

*The above valuated price is a baseline figure that does not take into account any specific renovation, upgrade, split, merge, or deterioration of the unit.*

## Building Information

Number of units: 61  
 Number of active listings for rent: 0  
 Number of active listings for sale: 13  
 Building inventory for sale: 21%  
 Number of sales over the last 12 months: 9  
 Number of sales over the last 6 months: 4  
 Number of sales over the last 3 months: 3

## Building Association Information

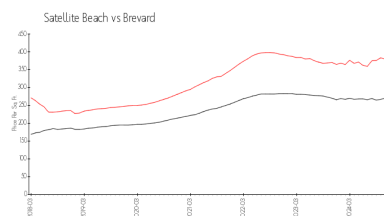
Sandpiper Towers  
 Address: 205 Florida A1A #100,  
 Satellite Beach, FL 32937  
 Phone: +1 321-773-7344

<http://www.sandpipertowers.com/>

## Recent Sales

Unit #	Size	Closing Date	Sale Price	PPSF
308	1,047 sq ft	Jan 2025	\$365,000	\$349
507	1,047 sq ft	Dec 2024	\$475,000	\$454
505	1,047 sq ft	Aug 2024	\$457,000	\$436
405	1,047 sq ft	Jun 2024	\$460,000	\$439
611	795 sq ft	May 2024	\$369,000	\$464
610	743 sq ft	May 2024	\$476,000	\$641

## Market Information

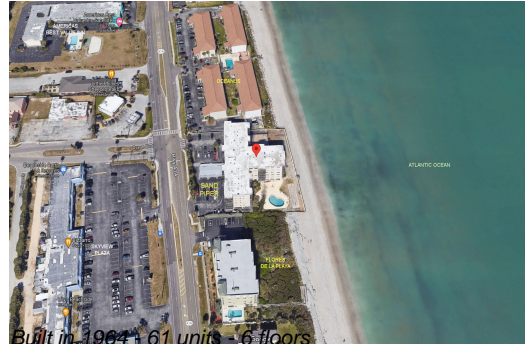


Sandpiper Towers: \$443/sq. ft.  
 Satellite Beach: \$376/sq. ft.

Satellite Beach: \$376/sq. ft.  
 Brevard: \$260/sq. ft.

## Inventory for Sale

Sandpiper Towers: 21%  
 Satellite Beach: 5%  
 Brevard: 3%



## **Avg. Time to Close Over Last 12 Months**

Sandpiper Towers	51 days
Satellite Beach	87 days
Brevard	271 days