

Unit 415 - Palms at Marsh Landing

415 - 1655 The Greens Way, Jacksonville Beach, FL, Duval 32250

Unit Information

MLS Number:	978734
Status:	Closed
Size:	1,156 Sq ft.
Bedrooms:	2
Full Bathrooms:	2
Half Bathrooms:	
Parking Spaces:	Assigned, Guest
View:	
Rental Price:	\$1,350
List PPSF:	\$1
Valuated Price:	\$280,000
Valuated PPSF:	\$242

The above valuated price is a baseline figure that does not take into account any specific renovation, upgrade, split, merge, or deterioration of the unit.

Building Information

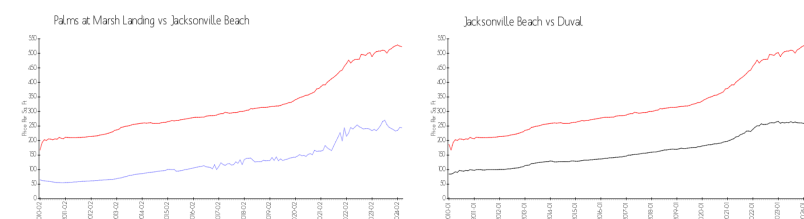
Number of units:	418
Number of active listings for rent:	0
Number of active listings for sale:	5
Building inventory for sale:	1%
Number of sales over the last 12 months:	22
Number of sales over the last 6 months:	7
Number of sales over the last 3 months:	4

Building Association Information

THE PALMS AT MARSH LANDING
CONDOMINIUM ASSOCIATION, INC.
11555 CENTRAL PKWY STE 801
JACKSONVILLE FL 32224
PHONE 904-998-5365
FAX 904-998-5366

http://www.thepalmsatmarshlanding.org/outside_home.asp

Market Information



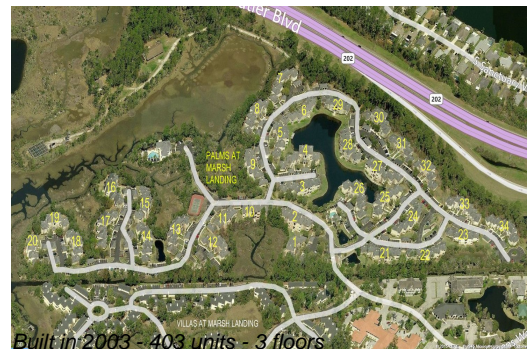
Palms at Marsh Landing:	\$244/sq. ft.	Jacksonville Beach:	\$523/sq. ft.
Jacksonville Beach:	\$523/sq. ft.	Duval:	\$222/sq. ft.

Inventory for Sale

Palms at Marsh Landing	1%
Jacksonville Beach	2%
Duval	1%

Avg. Time to Close Over Last 12 Months

Palms at Marsh Landing	74 days
Jacksonville Beach	37 days



Duval

45 days