

Unit 236 - Environ 1-8 phase 2

236 - 7080 Environ Blvd, Lauderhill, FL, Broward 33319

Unit Information

MLS Number:	A11517325
Status:	Active
Size:	1,583 Sq ft.
Bedrooms:	3
Full Bathrooms:	2
Half Bathrooms:	
Parking Spaces:	1 Space,Deeded Parking,Guest Parking
View:	
List Price:	\$184,990
List PPSF:	\$117
Valuated Price:	\$184,000
Valuated PPSF:	\$116

The above valuated price is a baseline figure that does not take into account any specific renovation, upgrade, split, merge, or deterioration of the unit.

Building Information

Number of units:	408
Number of active listings for rent:	0
Number of active listings for sale:	23
Building inventory for sale:	5%
Number of sales over the last 12 months:	14
Number of sales over the last 6 months:	4
Number of sales over the last 3 months:	2

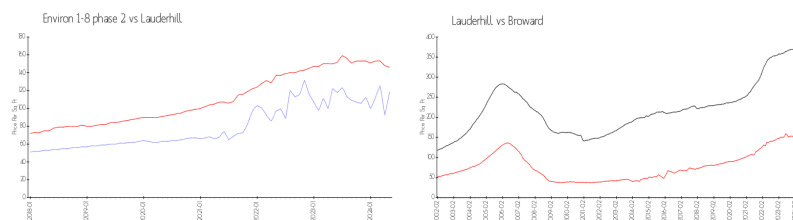
Building Association Information

Environ Condominium Phase II
Address: 3721 Environ Blvd,
Lauderhill, FL 33319,
Phone: +1 954-484-9580

Recent Sales

Unit #	Size	Closing Date	Sale Price	PPSF
349	1,060 sq ft	Jun 2024	\$135,000	\$127
556	1,483 sq ft	Apr 2024	\$140,000	\$94
265	1,100 sq ft	Mar 2024	\$135,000	\$123
665	1,100 sq ft	Jan 2024	\$112,000	\$102
252	1,296 sq ft	Dec 2023	\$117,000	\$90

Market Information

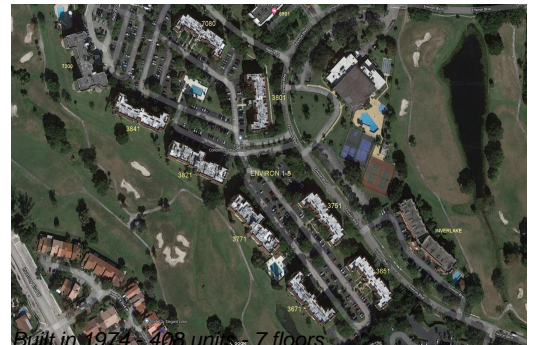


Environ 1-8 phase 2: \$118/sq. ft.
Lauderhill: \$146/sq. ft.

Lauderhill: \$146/sq. ft.
Broward: \$351/sq. ft.

Inventory for Sale

Environ 1-8 phase 2	6%
Lauderhill	5%
Broward	4%



Avg. Time to Close Over Last 12 Months

Environ 1-8 phase 2	155 days
Lauderhill	75 days
Broward	69 days