

Unit 609S - Summit Towers

609S - 1201 S Ocean Dr, Hollywood Beach, FL, Broward 33019

Unit Information

MLS Number:	A11580989
Status:	Cancelled
Size:	1,190 Sq ft.
Bedrooms:	1
Full Bathrooms:	1
Half Bathrooms:	1
Parking Spaces:	1 Space,Covered Parking,Guest Parking
View:	
List Price:	\$449,000
List PPSF:	\$377
Valuated Price:	\$417,000
Valuated PPSF:	\$363

The above valuated price is a baseline figure that does not take into account any specific renovation, upgrade, split, merge, or deterioration of the unit.

Building Information

Number of units:	567
Number of active listings for rent:	4
Number of active listings for sale:	23
Building inventory for sale:	4%
Number of sales over the last 12 months:	35
Number of sales over the last 6 months:	16
Number of sales over the last 3 months:	4

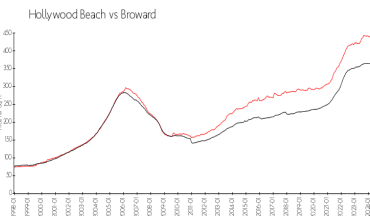
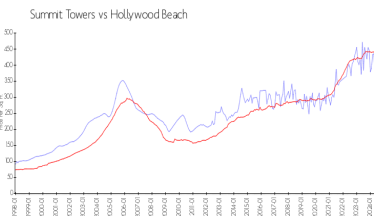
Building Association Information

Summit Towers Condominium Association Inc
1201 S Ocean Drive Hollywood, FL33019
(954) 925-3337

Recent Sales

Unit #	Size	Closing Date	Sale Price	PPSF
2502N	1,990 sq ft	Aug 2024	\$825,000	\$415
218S	864 sq ft	Jul 2024	\$287,000	\$332
2505S	1,570 sq ft	Jul 2024	\$550,000	\$350
2410N	1,570 sq ft	Jul 2024	\$520,000	\$331
2108N	1,570 sq ft	Jun 2024	\$725,000	\$462
406S	1,570 sq ft	Jun 2024	\$613,000	\$390
1705S	1,570 sq ft	Jun 2024	\$775,000	\$494
811N	1,660 sq ft	Jun 2024	\$590,000	\$355

Market Information

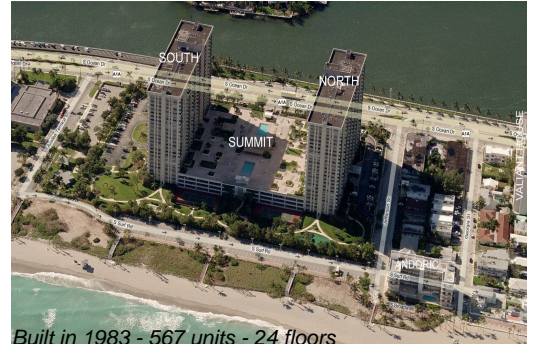


Summit Towers:	\$392/sq. ft.	Hollywood Beach:	\$436/sq. ft.
Hollywood Beach:	\$436/sq. ft.	Broward:	\$351/sq. ft.

Inventory for Sale

Summit Towers	4%
Hollywood Beach	6%
Broward	4%

Avg. Time to Close Over Last 12 Months



Summit Towers
Hollywood Beach
Broward

69 days
87 days
72 days