

Unit 312S - Summit Towers

312S - 1201 S Ocean Dr, Hollywood Beach, FL, Broward 33019

Unit Information

MLS Number: A11584615
 Status: Active
 Size: 736 Sq ft.
 Bedrooms: 1
 Full Bathrooms: 1
 Half Bathrooms:
 Parking Spaces: 1 Space,Covered Parking,Deeded Parking
 View:
 List Price: \$275,000
 List PPSF: \$374
 Valuated Price: \$242,000
 Valuated PPSF: \$306

The above valuated price is a baseline figure that does not take into account any specific renovation, upgrade, split, merge, or deterioration of the unit.

Building Information

Number of units: 567
 Number of active listings for rent: 4
 Number of active listings for sale: 13
 Building inventory for sale: 2%
 Number of sales over the last 12 months: 32
 Number of sales over the last 6 months: 24
 Number of sales over the last 3 months: 10

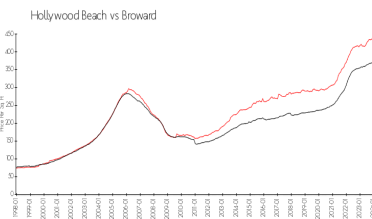
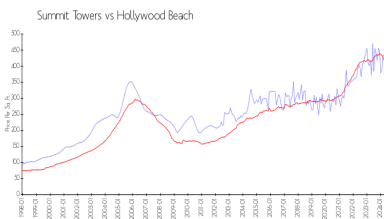
Building Association Information

Summit Towers Condominium Association Inc
 1201 S Ocean Drive Hollywood, FL33019
 (954) 925-3337

Recent Sales

Unit #	Size	Closing Date	Sale Price	PPSF
1705S	1,570 sq ft	Jun 2024	\$775,000	\$494
811N	1,660 sq ft	Jun 2024	\$590,000	\$355
2003n	1,570 sq ft	May 2024	\$520,000	\$331
507S	1,190 sq ft	May 2024	\$415,000	\$349
208N	1,088 sq ft	May 2024	\$350,000	\$322

Market Information

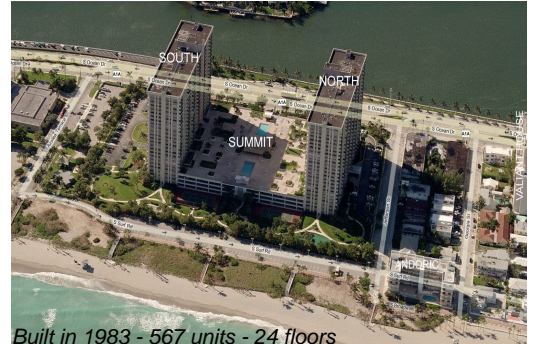


Summit Towers: \$358/sq. ft.
 Hollywood Beach: \$412/sq. ft.
 Broward: \$351/sq. ft.

Inventory for Sale

Summit Towers 2%
 Hollywood Beach 5%
 Broward 4%

Avg. Time to Close Over Last 12 Months



Summit Towers
Hollywood Beach
Broward

62 days
90 days
69 days