

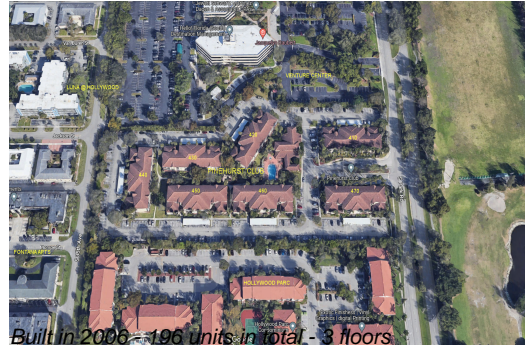
Unit 420 S Park Rd # 2-109 - Pinehurst Club (410 to 470)

420 S Park Rd # 2-109 - 410 S Park Rd, Hollywood Beach, FL, Broward 33021

Unit Information

MLS Number: A11593582
 Status: Active
 Size: 1,067 Sq ft.
 Bedrooms: 2
 Full Bathrooms: 2
 Half Bathrooms:
 Parking Spaces: 2 Spaces,Assigned Parking,Covered Parking
 View:
 Rental Price: \$2,500
 List PPSF: \$2
 Valuated Price: \$272,000
 Valuated PPSF: \$314

The above valuated price is a baseline figure that does not take into account any specific renovation, upgrade, split, merge, or deterioration of the unit.



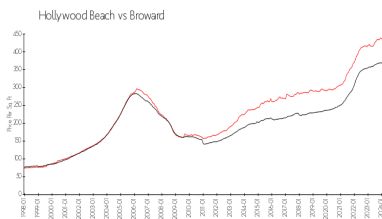
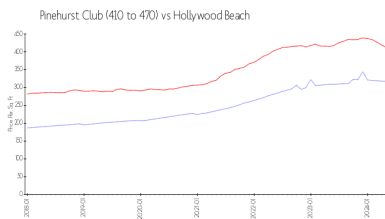
Building Information

Number of units: 196
 Number of active listings for rent: 0
 Number of active listings for sale: 4
 Building inventory for sale: 2%
 Number of sales over the last 12 months: 10
 Number of sales over the last 6 months: 4
 Number of sales over the last 3 months: 1

Building Association Information

Pinehurst Club
 Address: 400 S Park Rd,
 Hollywood, FL 33021
 Phone: +1 305-936-9229

Market Information



Pinehurst Club (410 to 470): \$317/sq. ft.
 Hollywood Beach: \$412/sq. ft.
 Hollywood Beach: \$412/sq. ft.
 Broward: \$351/sq. ft.

Inventory for Sale

Pinehurst Club (410 to 470) 2%
 Hollywood Beach 5%
 Broward 4%

Avg. Time to Close Over Last 12 Months

Pinehurst Club (410 to 470) 33 days
 Hollywood Beach 89 days
 Broward 69 days