

# Unit 440 SE 2nd Ave # C3 - Sequoia Gardens

440 SE 2nd Ave # C3 - 410 SE 2 Ave, Deerfield Beach, FL, Broward 33441

## Unit Information

MLS Number:	A11656689
Status:	Active
Size:	650 Sq ft.
Bedrooms:	1
Full Bathrooms:	1
Half Bathrooms:	
Parking Spaces:	1 Space, Additional Spaces Available
View:	
List Price:	\$139,000
List PPSF:	\$214
Valuated Price:	\$139,000
Valuated PPSF:	\$214

*The above valuated price is a baseline figure that does not take into account any specific renovation, upgrade, split, merge, or deterioration of the unit.*

## Building Information

Number of units:	140
Number of active listings for rent:	0
Number of active listings for sale:	36
Building inventory for sale:	25%
Number of sales over the last 12 months:	41
Number of sales over the last 6 months:	20
Number of sales over the last 3 months:	8

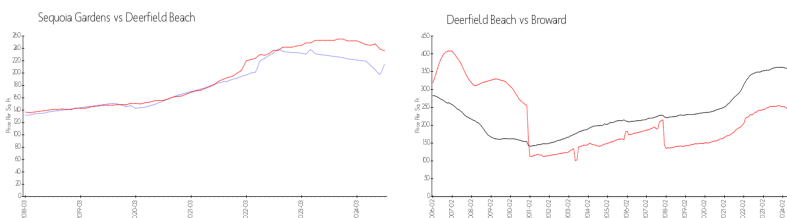
## Building Association Information

Sequoia Gardens Condominium  
Address: 510 SE 2nd Ave,  
Deerfield Beach, FL 33441  
Phone: +1 954-360-0127

## Recent Sales

Unit #	Size	Closing Date	Sale Price	PPSF
L7	840 sq ft	Sep 2024	\$180,000	\$214
H24	650 sq ft	Sep 2024	\$120,000	\$185
K3	840 sq ft	Aug 2024	\$175,000	\$208
G-21	840 sq ft	Aug 2024	\$158,100	\$188
J-26	840 sq ft	May 2024	\$185,000	\$220

## Market Information



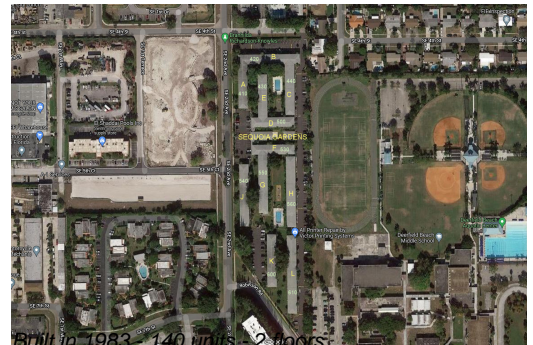
Sequoia Gardens:	\$215/sq. ft.	Deerfield Beach:	\$236/sq. ft.
Deerfield Beach:	\$236/sq. ft.	Broward:	\$339/sq. ft.

## Inventory for Sale

Sequoia Gardens	26%
Deerfield Beach	4%
Broward	4%

## Avg. Time to Close Over Last 12 Months

Sequoia Gardens	84 days
Deerfield Beach	63 days



Broward

74 days