

# Unit 9501 SW 1St Ct - Rivers Edge at Oakwood

9501 SW 1St Ct - 9501-9603 SW 1Ct, Coral Springs, FL, Broward 33071

## Unit Information

MLS Number:	A11872784
Status:	Active
Size:	1,150 Sq ft.
Bedrooms:	3
Full Bathrooms:	2
Half Bathrooms:	0
Parking Spaces:	Assigned Parking,Guest Parking
View:	Garden View
Rental Price:	\$2,500
List PPSF:	\$2
Valuated Price:	\$250,000
Valuated PPSF:	\$217

*The above valuated price is a baseline figure that does not take into account any specific renovation, upgrade, split, merge, or deterioration of the unit.*

## Building Information

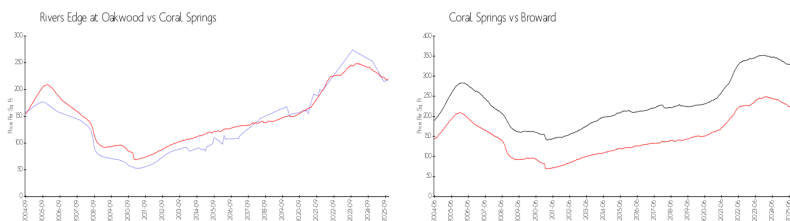
Number of units:	52
Number of active listings for rent:	0
Number of active listings for sale:	2
Building inventory for sale:	3%
Number of sales over the last 12 months:	2
Number of sales over the last 6 months:	1
Number of sales over the last 3 months:	0

## Building Association Information

RIVERS EDGE AT OAKWOOD CONDOMINIUM INC.  
PHOENIX MANAGEMENT SERVICES INC  
3082 JOG RD  
GREENACRES FL  
561-296-0198

<https://>

## Market Information



Rivers Edge at Oakwood:	\$218/sq. ft.	Coral Springs:	\$220/sq. ft.
Coral Springs:	\$220/sq. ft.	Broward:	\$311/sq. ft.

## Inventory for Sale

Rivers Edge at Oakwood	4%
Coral Springs	2%
Broward	4%

## Avg. Time to Close Over Last 12 Months

Rivers Edge at Oakwood	57 days
Coral Springs	71 days
Broward	88 days

