

Unit 729 - Cypress Park

729 - 126-140 S Cypress Rd, Pompano Beach, FL, Broward 33060

Unit Information

MLS Number:	A11875906
Status:	Active
Size:	936 Sq ft.
Bedrooms:	2
Full Bathrooms:	2
Half Bathrooms:	0
Parking Spaces:	1 Space,Assigned Parking,Guest Parking
View:	Garden View
Rental Price:	\$1,800
List PPSF:	\$2
Valuated Price:	\$172,000
Valuated PPSF:	\$184

The above valuated price is a baseline figure that does not take into account any specific renovation, upgrade, split, merge, or deterioration of the unit.

Building Information

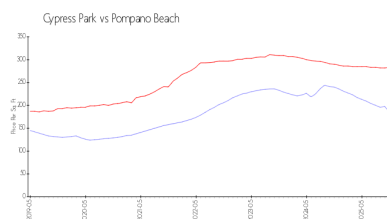
Number of units:	150
Number of active listings for rent:	0
Number of active listings for sale:	5
Building inventory for sale:	3%
Number of sales over the last 12 months:	3
Number of sales over the last 6 months:	3
Number of sales over the last 3 months:	3

Building Association Information

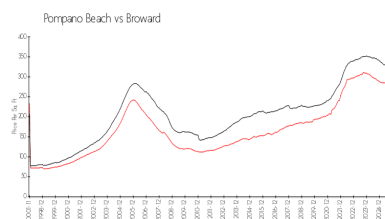
Cypress Park Condominium
140 S Cypress Rd
Pompano Beach, FL 33060
(954) 782-1884

<https://>

Market Information



Cypress Park: \$184/sq. ft.
Pompano Beach: \$283/sq. ft.



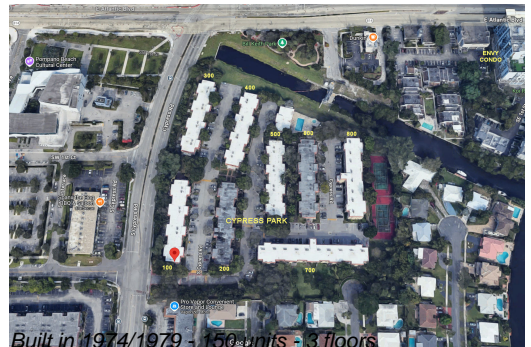
Pompano Beach: \$283/sq. ft.
Broward: \$311/sq. ft.

Inventory for Sale

Cypress Park	3%
Pompano Beach	3%
Broward	4%

Avg. Time to Close Over Last 12 Months

Cypress Park	113 days
Pompano Beach	88 days
Broward	88 days



Built in 1974/1979 - 150 units - 3 floors