

Unit 540 SE 2nd Ave # J3 - Sequoia Gardens

540 SE 2nd Ave # J3 - 410 SE 2 Ave, Deerfield Beach, FL, Broward 33441

Unit Information

MLS Number:	A11910436
Status:	Active
Size:	840 Sq ft.
Bedrooms:	2
Full Bathrooms:	1
Half Bathrooms:	0
Parking Spaces:	1 Space,Additional Spaces Available
View:	
List Price:	\$209,902
List PPSF:	\$250
Valuated Price:	\$200,000
Valuated PPSF:	\$238

The above valuated price is a baseline figure that does not take into account any specific renovation, upgrade, split, merge, or deterioration of the unit.

Building Information

Number of units:	140
Number of active listings for rent:	0
Number of active listings for sale:	24
Building inventory for sale:	17%
Number of sales over the last 12 months:	26
Number of sales over the last 6 months:	15
Number of sales over the last 3 months:	5

Building Association Information

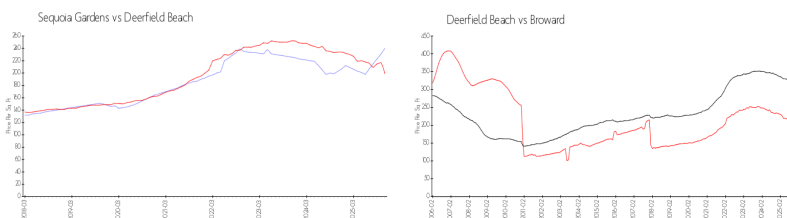
Sequoia Gardens Condominium
Address: 510 SE 2nd Ave,
Deerfield Beach, FL 33441
Phone: +1 954-360-0127

<https://>

Recent Sales

Unit #	Size	Closing Date	Sale Price	PPSF
4	650 sq ft	Nov 2025	\$155,000	\$238
5	840 sq ft	Aug 2025	\$140,000	\$167
3	840 sq ft	Jun 2025	\$160,000	\$190
#F22	840 sq ft	Jun 2025	\$135,000	\$161
26	1,000 sq ft	Jun 2025	\$242,500	\$243

Market Information

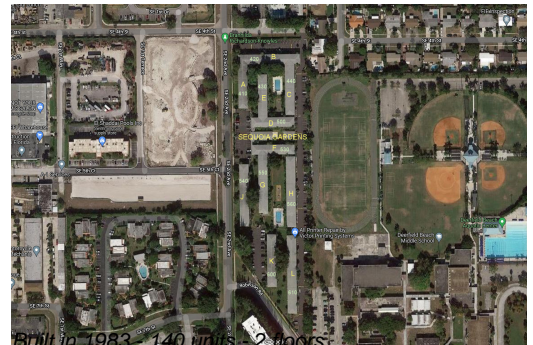


Sequoia Gardens:	\$240/sq. ft.	Deerfield Beach:	\$199/sq. ft.
Deerfield Beach:	\$199/sq. ft.	Broward:	\$311/sq. ft.

Inventory for Sale

Sequoia Gardens	17%
Deerfield Beach	4%
Broward	4%

Avg. Time to Close Over Last 12 Months



Sequoia Gardens
Deerfield Beach
Broward

95 days
87 days
88 days