

Unit 518 - Cypress Park

518 - 126-140 S Cypress Rd, Pompano Beach, FL, Broward 33060

Unit Information

MLS Number:	A11919412
Status:	Active
Size:	936 Sq ft.
Bedrooms:	2
Full Bathrooms:	2
Half Bathrooms:	0
Parking Spaces:	Assigned Parking
View:	
List Price:	\$245,000
List PPSF:	\$262
Valuated Price:	\$171,000
Valuated PPSF:	\$183

The above valuated price is a baseline figure that does not take into account any specific renovation, upgrade, split, merge, or deterioration of the unit.

Building Information

Number of units:	150
Number of active listings for rent:	0
Number of active listings for sale:	6
Building inventory for sale:	4%
Number of sales over the last 12 months:	3
Number of sales over the last 6 months:	3
Number of sales over the last 3 months:	3

Building Association Information

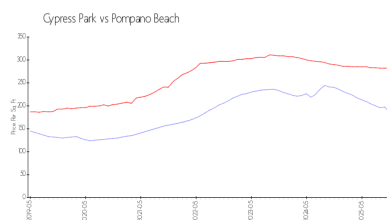
Cypress Park Condominium
140 S Cypress Rd
Pompano Beach, FL 33060
(954) 782-1884

<https://>

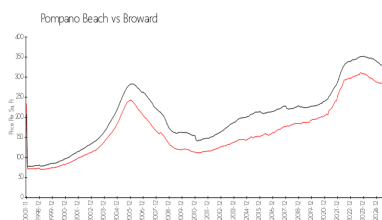
Recent Sales

Unit #	Size	Closing Date	Sale Price	PPSF
323	936 sq ft	Dec 2025	\$196,900	\$210
#128		Oct 2025	\$185,000	
215	936 sq ft	Sep 2025	\$182,000	\$194

Market Information



Cypress Park: \$184/sq. ft.
Pompano Beach: \$283/sq. ft.



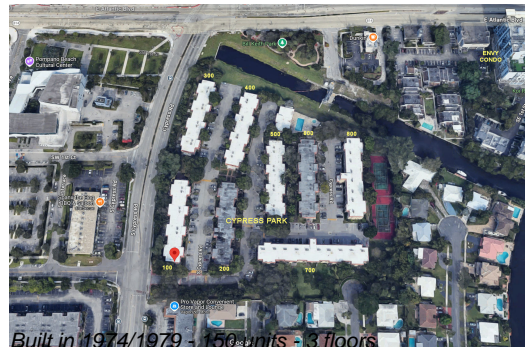
Pompano Beach: \$283/sq. ft.
Broward: \$311/sq. ft.

Inventory for Sale

Cypress Park	4%
Pompano Beach	3%
Broward	4%

Avg. Time to Close Over Last 12 Months

Cypress Park	113 days
--------------	----------



Built in 1974/1979 - 150 units - 3 floors

Pompano Beach
Broward

88 days
87 days