

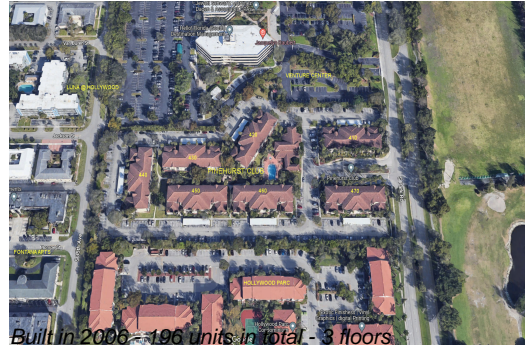
# Unit 410 S Park Rd # 1-207 - Pinehurst Club (410 to 470)

410 S Park Rd # 1-207 - 410 S Park Rd, Hollywood Beach, FL, Broward 33021

## Unit Information

MLS Number:	A11924761
Status:	Active
Size:	1,270 Sq ft.
Bedrooms:	3
Full Bathrooms:	2
Half Bathrooms:	0
Parking Spaces:	2 Spaces,Assigned Parking,Guest Parking
View:	Garden View
Rental Price:	\$2,650
List PPSF:	\$2
Valuated Price:	\$321,000
Valuated PPSF:	\$296

*The above valuated price is a baseline figure that does not take into account any specific renovation, upgrade, split, merge, or deterioration of the unit.*



## Building Information

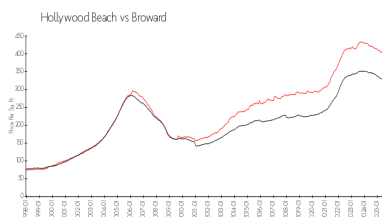
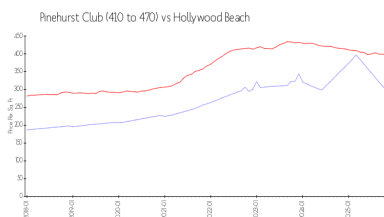
Number of units:	196
Number of active listings for rent:	0
Number of active listings for sale:	6
Building inventory for sale:	3%
Number of sales over the last 12 months:	5
Number of sales over the last 6 months:	2
Number of sales over the last 3 months:	1

## Building Association Information

Pinehurst Club  
Address: 400 S Park Rd,  
Hollywood, FL 33021  
Phone: +1 305-936-9229

<https://>

## Market Information



Pinehurst Club (410 to 470): \$296/sq. ft.

Hollywood Beach: \$396/sq. ft.

Hollywood Beach: \$396/sq. ft.

Broward: \$311/sq. ft.

## Inventory for Sale

Pinehurst Club (410 to 470)	3%
Hollywood Beach	6%
Broward	4%

## Avg. Time to Close Over Last 12 Months

Pinehurst Club (410 to 470)	80 days
Hollywood Beach	102 days
Broward	88 days