

# Unit 410 SE 2nd Ave # A1 - Sequoia Gardens

410 SE 2nd Ave # A1 - 410 SE 2 Ave, Deerfield Beach, FL, Broward 33441

## Unit Information

MLS Number: F10425741  
 Status: Active  
 Size: 1,000 Sq ft.  
 Bedrooms: 3  
 Full Bathrooms: 2  
 Half Bathrooms: 0  
 Parking Spaces: 1 Space, Guest Parking  
 View: Other View  
 List Price: \$265,000  
 List PPSF: \$265  
 Valuated Price: \$227,000  
 Valuated PPSF: \$227

*The above valuated price is a baseline figure that does not take into account any specific renovation, upgrade, split, merge, or deterioration of the unit.*

## Building Information

Number of units: 140  
 Number of active listings for rent: 0  
 Number of active listings for sale: 16  
 Building inventory for sale: 11%  
 Number of sales over the last 12 months: 43  
 Number of sales over the last 6 months: 20  
 Number of sales over the last 3 months: 9

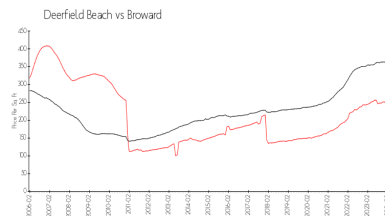
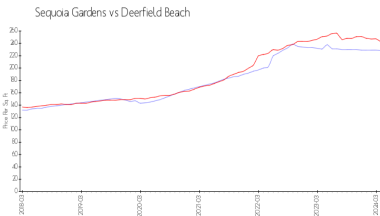
## Building Association Information

Sequoia Gardens Condominium  
 Address: 510 SE 2nd Ave,  
 Deerfield Beach, FL 33441  
 Phone: +1 954-360-0127

## Recent Sales

Unit #	Size	Closing Date	Sale Price	PPSF
21	1,000 sq ft	Mar 2024	\$255,000	\$255
L25		Jun 2023	\$195,000	

## Market Information



Sequoia Gardens: \$228/sq. ft.  
 Deerfield Beach: \$242/sq. ft.

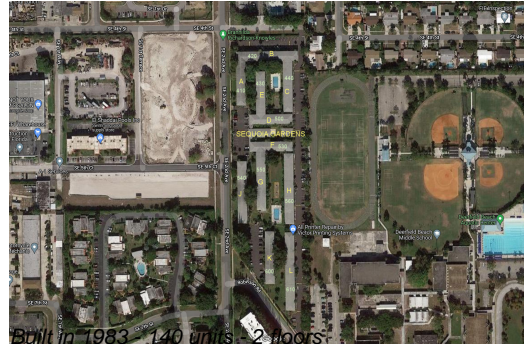
Deerfield Beach: \$242/sq. ft.  
 Broward: \$348/sq. ft.

## Inventory for Sale

Sequoia Gardens: 11%  
 Deerfield Beach: 3%  
 Broward: 3%

## Avg. Time to Close Over Last 12 Months

Sequoia Gardens: 88 days



Deerfield Beach  
Broward

60 days  
66 days