

# Unit 540 SE 2nd Ave # J7 - Sequoia Gardens

540 SE 2nd Ave # J7 - 410 SE 2 Ave, Deerfield Beach, FL, Broward 33441

## Unit Information

MLS Number: F10446498  
 Status: Active  
 Size: 1,000 Sq ft.  
 Bedrooms: 3  
 Full Bathrooms: 2  
 Half Bathrooms: 0  
 Parking Spaces: 1 Space, Guest Parking  
 View: Garden View  
 List Price: \$309,900  
 List PPSF: \$310  
 Valuated Price: \$226,000  
 Valuated PPSF: \$226

*The above valuated price is a baseline figure that does not take into account any specific renovation, upgrade, split, merge, or deterioration of the unit.*

## Building Information

Number of units: 140  
 Number of active listings for rent: 0  
 Number of active listings for sale: 22  
 Building inventory for sale: 15%  
 Number of sales over the last 12 months: 47  
 Number of sales over the last 6 months: 22  
 Number of sales over the last 3 months: 10

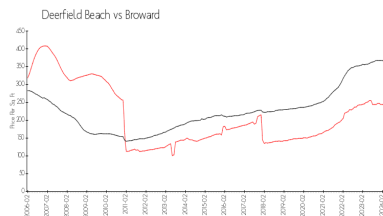
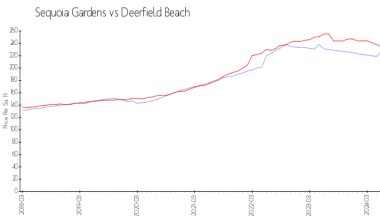
## Building Association Information

Sequoia Gardens Condominium  
 Address: 510 SE 2nd Ave,  
 Deerfield Beach, FL 33441  
 Phone: +1 954-360-0127

## Recent Sales

Unit #	Size	Closing Date	Sale Price	PPSF
J-26	840 sq ft	May 2024	\$185,000	\$220
21	1,000 sq ft	Mar 2024	\$255,000	\$255

## Market Information



Sequoia Gardens: \$227/sq. ft.  
 Deerfield Beach: \$234/sq. ft.

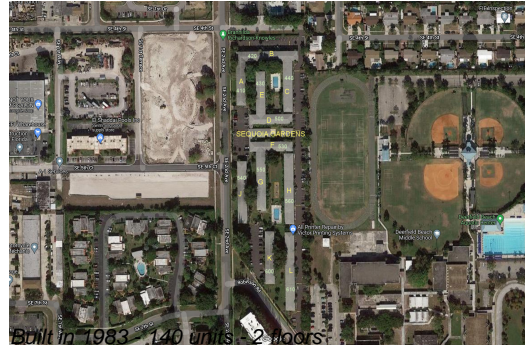
Deerfield Beach: \$234/sq. ft.  
 Broward: \$349/sq. ft.

## Inventory for Sale

Sequoia Gardens: 16%  
 Deerfield Beach: 3%  
 Broward: 4%

## Avg. Time to Close Over Last 12 Months

Sequoia Gardens: 84 days



Deerfield Beach  
Broward

63 days  
70 days