

Unit PH-G - Drake Tower

PH-G - 1800 N Andrews Ave, Fort Lauderdale, FL, Broward 1974

Unit Information

MLS Number:	F10471503
Status:	Active
Size:	980 Sq ft.
Bedrooms:	2
Full Bathrooms:	2
Half Bathrooms:	0
Parking Spaces:	2 Or More Spaces,Guest Parking,Open Space Parking
View:	Other View
List Price:	\$286,900
List PPSF:	\$293
Valuated Price:	\$299,000
Valuated PPSF:	\$305

The above valuated price is a baseline figure that does not take into account any specific renovation, upgrade, split, merge, or deterioration of the unit.

Building Information

Number of units:	143
Number of active listings for rent:	0
Number of active listings for sale:	5
Building inventory for sale:	3%
Number of sales over the last 12 months:	7
Number of sales over the last 6 months:	3
Number of sales over the last 3 months:	2

Building Association Information

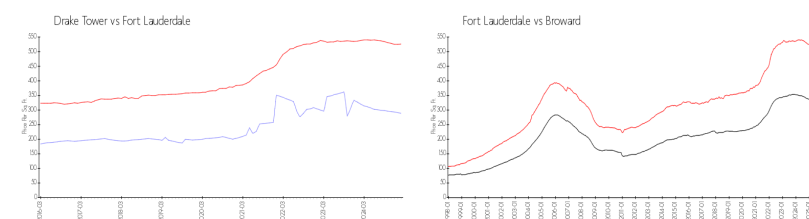
Drake Tower
Address: 1800 N Andrews Ave,
Fort Lauderdale, FL 33311
Phone: +1 954-763-1205

<http://draketowercondo.com/Page/27>

Recent Sales

Unit #	Size	Closing Date	Sale Price	PPSF
8C	670 sq ft	Mar 2025	\$195,000	\$291
3E	850 sq ft	Feb 2025	\$188,000	\$221
4K	775 sq ft	Nov 2024	\$260,000	\$335
10K	775 sq ft	Sep 2024	\$197,000	\$254
12K	850 sq ft	Jul 2024	\$230,000	\$271

Market Information

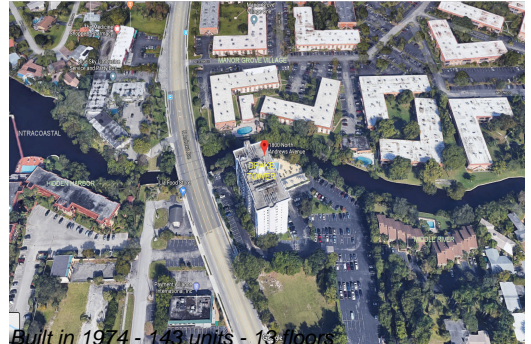


Drake Tower: \$288/sq. ft.
Fort Lauderdale: \$521/sq. ft.

Fort Lauderdale: \$521/sq. ft.
Broward: \$324/sq. ft.

Inventory for Sale

Drake Tower	3%
Fort Lauderdale	6%
Broward	5%



Avg. Time to Close Over Last 12 Months

Drake Tower	45 days
Fort Lauderdale	92 days
Broward	83 days