

Unit 9541 SW 1St Ct - Rivers Edge at Oakwood

9541 SW 1St Ct - 9501-9603 SW 1Ct, Coral Springs, FL, Broward 33071

Unit Information

MLS Number:	F10537676
Status:	Active
Size:	865 Sq ft.
Bedrooms:	2
Full Bathrooms:	2
Half Bathrooms:	0
Parking Spaces:	1 Space,Assigned Parking,Guest Parking
View:	
List Price:	\$235,000
List PPSF:	\$272
Valuated Price:	\$190,000
Valuated PPSF:	\$220

The above valuated price is a baseline figure that does not take into account any specific renovation, upgrade, split, merge, or deterioration of the unit.

Building Information

Number of units:	52
Number of active listings for rent:	0
Number of active listings for sale:	2
Building inventory for sale:	3%
Number of sales over the last 12 months:	2
Number of sales over the last 6 months:	1
Number of sales over the last 3 months:	0

Building Association Information

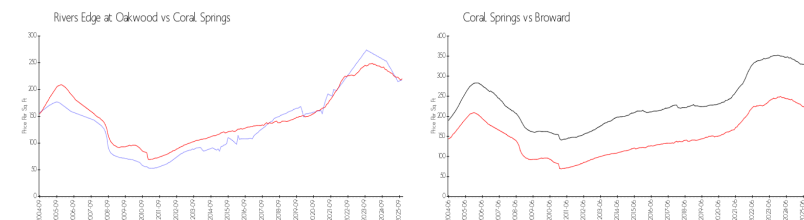
RIVERS EDGE AT OAKWOOD CONDOMINIUM INC.
PHOENIX MANAGEMENT SERVICES INC
3082 JOG RD
GREENACRES FL
561-296-0198

<https://>

Recent Sales

Unit #	Size	Closing Date	Sale Price	PPSF
9595	1,150 sq ft	Aug 2025	\$249,000	\$217
9541	865 sq ft	Dec 2024	\$220,000	\$254

Market Information



Rivers Edge at Oakwood:	\$218/sq. ft.	Coral Springs:	\$220/sq. ft.
Coral Springs:	\$220/sq. ft.	Broward:	\$311/sq. ft.

Inventory for Sale

Rivers Edge at Oakwood	4%
Coral Springs	3%
Broward	4%



Avg. Time to Close Over Last 12 Months

Rivers Edge at Oakwood	57 days
Coral Springs	71 days
Broward	88 days