

# Unit 2512S - Summit Towers

2512S - 1201 S Ocean Dr, Hollywood Beach, FL, Broward 33019

## Unit Information

MLS Number: RX-11143964  
 Status: Active  
 Size: 1,660 Sq ft.  
 Bedrooms: 2  
 Full Bathrooms: 2  
 Half Bathrooms: 0  
 Parking Spaces: 2+ Spaces,Vehicle  
 Restrictions,Deeded,Guest,Under  
 Building,Covered

View: Ocean,Other,Lake,Intracoastal  
 List Price: \$950,000  
 List PPSF: \$572  
 Valuated Price: \$555,000  
 Valuated PPSF: \$355

*The above valuated price is a baseline figure that does not take into account any specific renovation, upgrade, split, merge, or deterioration of the unit.*

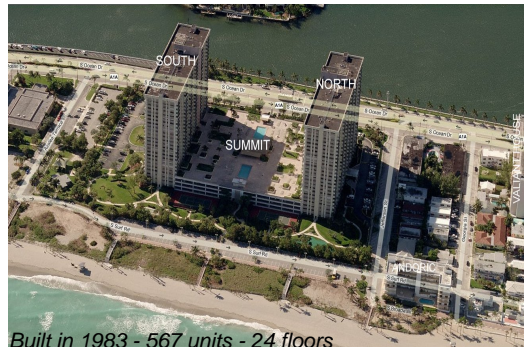
## Building Information

Number of units: 567  
 Number of active listings for rent: 4  
 Number of active listings for sale: 29  
 Building inventory for sale: 5%  
 Number of sales over the last 12 months: 19  
 Number of sales over the last 6 months: 8  
 Number of sales over the last 3 months: 3

## Building Association Information

Summit Towers Condominium Association Inc  
 1201 S Ocean Drive Hollywood, FL33019  
 (954) 925-3337

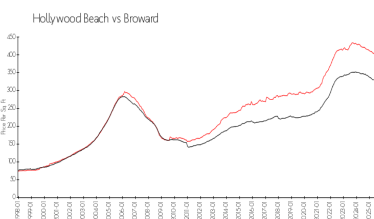
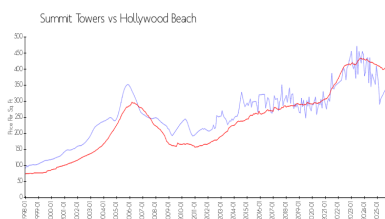
<https://>



## Recent Sales

Unit #	Size	Closing Date	Sale Price	PPSF
2107S	1,190 sq ft	Nov 2025	\$415,000	\$349
1711S	1,660 sq ft	Oct 2025	\$560,000	\$337
612N	1,660 sq ft	Sep 2025	\$465,000	\$280
701S	1,990 sq ft	Sep 2025	\$765,000	\$384
1002N	1,990 sq ft	Sep 2025	\$1,075,000	\$540

## Market Information



Summit Towers: \$334/sq. ft.  
 Hollywood Beach: \$396/sq. ft.

Hollywood Beach: \$396/sq. ft.  
 Broward: \$311/sq. ft.

## Inventory for Sale

Summit Towers: 5%  
 Hollywood Beach: 6%  
 Broward: 4%

### **Avg. Time to Close Over Last 12 Months**

Summit Towers	87 days
Hollywood Beach	102 days
Broward	88 days