

Unit 2914 - Palms at Marsh Landing

2914 - 1655 The Greens Way, Jacksonville Beach, FL, Duval 32250

Unit Information

MLS Number: 2037398
 Status: Pending
 Size: 1,156 Sq ft.
 Bedrooms: 2
 Full Bathrooms: 2
 Half Bathrooms: 0
 Parking Spaces: Assigned, Guest, RV Access/Parking
 View: Pond, Trees/Woods
 List Price: \$299,500
 List PPSF: \$259
 Valuated Price: \$271,000
 Valuated PPSF: \$234

The above valuated price is a baseline figure that does not take into account any specific renovation, upgrade, split, merge, or deterioration of the unit.

Building Information

Number of units: 418
 Number of active listings for rent: 0
 Number of active listings for sale: 5
 Building inventory for sale: 1%
 Number of sales over the last 12 months: 8
 Number of sales over the last 6 months: 6
 Number of sales over the last 3 months: 3

Building Association Information

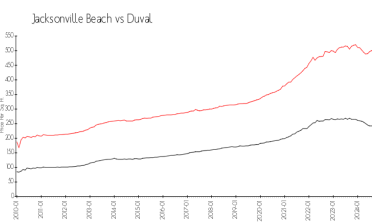
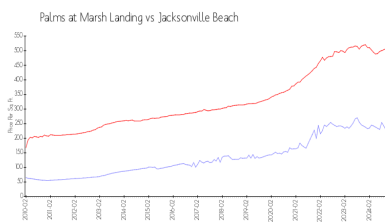
THE PALMS AT MARSH LANDING
 CONDOMINIUM ASSOCIATION, INC.
 11555 CENTRAL PKWY STE 801
 JACKSONVILLE FL 32224
 PHONE 904-998-5365
 FAX 904-998-5366

http://www.thepalmsatmarshlanding.org/outside_home.asp

Recent Sales

Unit #	Size	Closing Date	Sale Price	PPSF
224	1,156 sq ft	Oct 2024	\$230,000	\$199
2216	1,413 sq ft	Oct 2024	\$370,000	\$262
114	1,156 sq ft	Oct 2024	\$315,000	\$272
1515	842 sq ft	Aug 2024	\$216,000	\$257
1631	1,156 sq ft	Aug 2024	\$344,000	\$298

Market Information

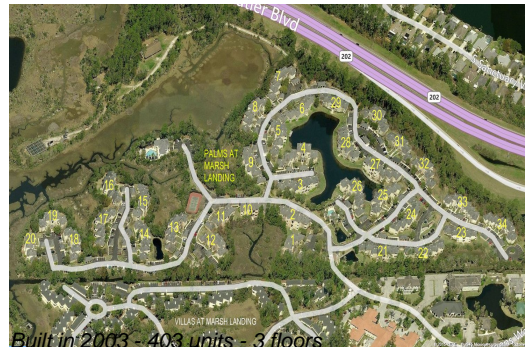


Palms at Marsh Landing: \$236/sq. ft.
 Jacksonville Beach: \$481/sq. ft.

Jacksonville Beach: \$481/sq. ft.
 Duval: \$207/sq. ft.

Inventory for Sale

Palms at Marsh Landing: 1%
 Jacksonville Beach: 2%



Duval

1%

Avg. Time to Close Over Last 12 Months

Palms at Marsh Landing

65 days

Jacksonville Beach

59 days

Duval

57 days