

Unit 2106 - Bishop's Court at Windsor Parke

2106 - 13700-13703 Richmond Park Dr N, Jacksonville, FL, Duval 32224

Unit Information

MLS Number: 2047935
 Status: Active
 Size: 1,229 Sq ft.
 Bedrooms: 2
 Full Bathrooms: 2
 Half Bathrooms: 0
 Parking Spaces: Unassigned
 View:
 List Price: \$244,900
 List PPSF: \$199
 Valuated Price: \$245,000
 Valuated PPSF: \$199

The above valuated price is a baseline figure that does not take into account any specific renovation, upgrade, split, merge, or deterioration of the unit.

Building Information

Number of units: 324
 Number of active listings for rent: 0
 Number of active listings for sale: 5
 Building inventory for sale: 1%
 Number of sales over the last 12 months: 7
 Number of sales over the last 6 months: 2
 Number of sales over the last 3 months: 0

Building Association Information

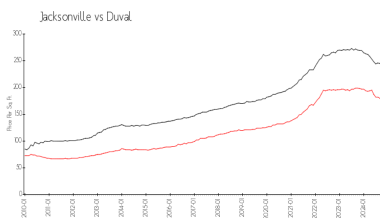
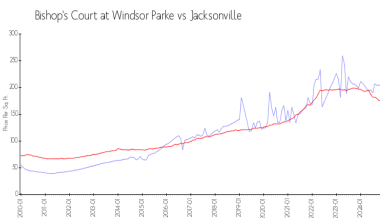
Bishop's Court At Windsor Park
 Condominium Complex
 Address: 13700 Richmond Park Dr N, Jacksonville, FL 32224,
 Phone:+1 904-821-0156

<http://windsorparke.org/>

Recent Sales

Unit #	Size	Closing Date	Sale Price	PPSF
908	1,229 sq ft	Oct 2024	\$252,500	\$205
1001	1,015 sq ft	Sep 2024	\$230,000	\$227
1408	1,229 sq ft	Jul 2024	\$233,000	\$190
606	1,170 sq ft	Jul 2024	\$215,000	\$184
2409	1,229 sq ft	Jun 2024	\$246,000	\$200
807	1,037 sq ft	Jun 2024	\$192,000	\$185

Market Information

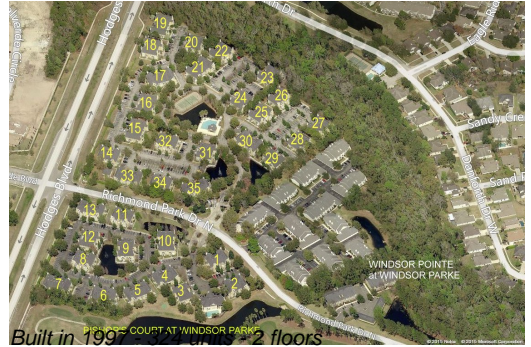


Bishop's Court at Windsor Parke: \$198/sq. ft.
 Jacksonville: \$173/sq. ft.

Jacksonville: \$173/sq. ft.
 Duval: \$210/sq. ft.

Inventory for Sale

Bishop's Court at Windsor Parke: 2%
 Jacksonville: 1%
 Duval: 1%



Avg. Time to Close Over Last 12 Months

Bishop's Court at Windsor Parke	48 days
Jacksonville	58 days
Duval	58 days