

Unit 1204 - Villa Sonoma at International Plaza

1204 - 4221 W Spruce St, Tampa, FL, Hillsborough 33607

Unit Information

MLS Number: T3459090
 Status: ACTIVE
 Size: 1,080 Sq ft.
 Bedrooms: 2
 Full Bathrooms: 2
 Half Bathrooms: 0
 Parking Spaces: Assigned, Covered, Garage Door Opener, Guest
 View:
 List Price: \$345,000
 List PPSF: \$319
 Valuated Price: \$307,000
 Valuated PPSF: \$284

The above valuated price is a baseline figure that does not take into account any specific renovation, upgrade, split, merge, or deterioration of the unit.

Building Information

Number of units: 240
 Number of active listings for rent: 0
 Number of active listings for sale: 12
 Building inventory for sale: 5%
 Number of sales over the last 12 months: 28
 Number of sales over the last 6 months: 18
 Number of sales over the last 3 months: 10

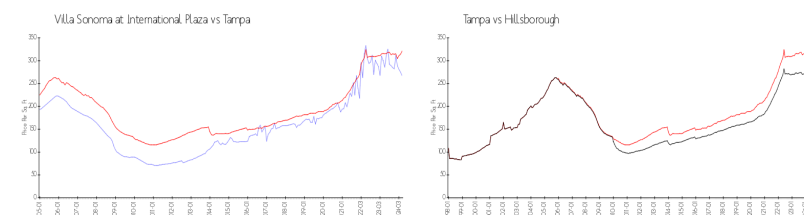
Building Association Information

Villa Sonoma At International Plaza Condominium Association, Inc
 4221 W Spruce Street Tampa, FL 33607
 Phone: (813) 877-8899

Recent Sales

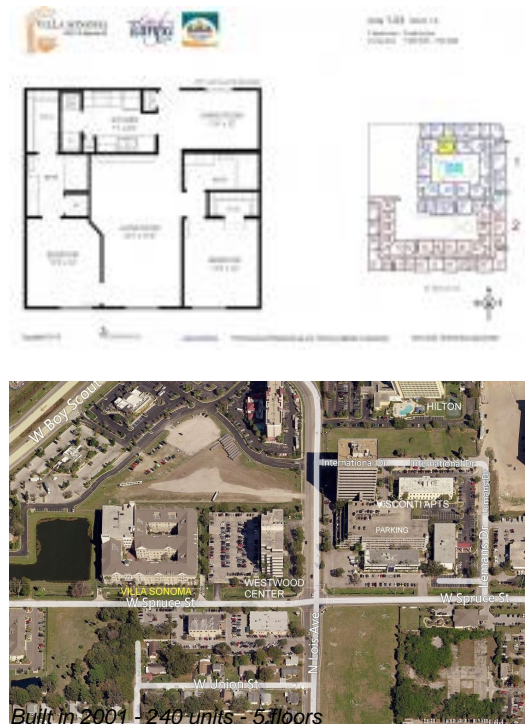
Unit #	Size	Closing Date	Sale Price	PPSF
2402	800 sq ft	May 2024	\$244,000	\$305
2224	792 sq ft	May 2024	\$232,000	\$293
2323	696 sq ft	Apr 2024	\$225,000	\$323
2109	800 sq ft	Apr 2024	\$229,000	\$286
2407	1,447 sq ft	Apr 2024	\$440,000	\$304
2312	992 sq ft	Apr 2024	\$300,000	\$302
1321	696 sq ft	Apr 2024	\$245,000	\$352

Market Information



Villa Sonoma at International Plaza:	\$267/sq. ft.	Tampa:	\$321/sq. ft.
Tampa:	\$321/sq. ft.	Hillsborough:	\$262/sq. ft.

Inventory for Sale



Villa Sonoma at International Plaza	5%
Tampa	2%
Hillsborough	2%

Avg. Time to Close Over Last 12 Months

Villa Sonoma at International Plaza	49 days
Tampa	44 days
Hillsborough	45 days