

# Unit 408 S Arrawana Ave # A3 - Audubon Park Homes of Tampa

408 S Arrawana Ave # A3 - 407-409 S Audubon Ave, Tampa, FL, Hillsborough 33609

## Unit Information

MLS Number:	T3475367
Status:	ACTIVE
Size:	1,122 Sq ft.
Bedrooms:	2
Full Bathrooms:	1
Half Bathrooms:	1
Parking Spaces:	
View:	
List Price:	\$399,900
List PPSF:	\$356
Valuated Price:	\$380,000
Valuated PPSF:	\$339

The above valuated price is a baseline figure that does not take into account any specific renovation, upgrade, split, merge, or deterioration of the unit.

## Building Information

Number of units:	25
Number of active listings for rent:	0
Number of active listings for sale:	1
Building inventory for sale:	4%
Number of sales over the last 12 months:	1
Number of sales over the last 6 months:	1
Number of sales over the last 3 months:	1

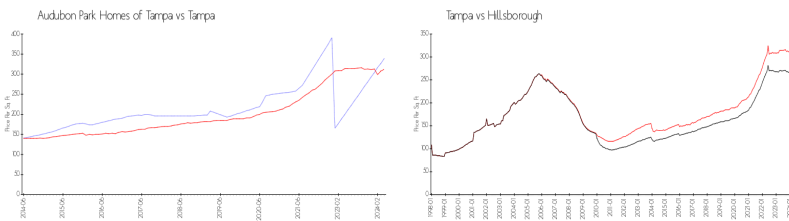
## Building Association Information

AUDUBON PARK HOMES OF TAMPA  
 CONDOMINIUM ASSOCIATION, INC  
 Addresses:  
 PO Box 10217, Tampa, FL 33679  
 408 S Arrawana Ave, Tampa, FL 33609  
 807 W Platt St, Tampa, FL 33606

## Recent Sales

Unit #	Size	Closing Date	Sale Price	PPSF
A3	1,122 sq ft	Feb 2024	\$395,000	\$352

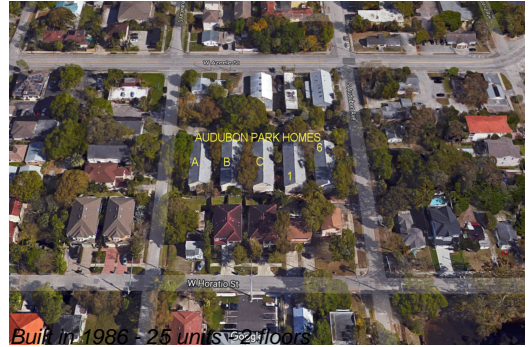
## Market Information



Audubon Park Homes of Tampa:	\$339/sq. ft.	Tampa:	\$312/sq. ft.
Tampa:	\$312/sq. ft.	Hillsborough:	\$251/sq. ft.

## Inventory for Sale

Audubon Park Homes of Tampa	4%
Tampa	2%
Hillsborough	2%



## **Avg. Time to Close Over Last 12 Months**

Audubon Park Homes of Tampa	101 days
Tampa	42 days
Hillsborough	44 days