

Unit 1910 E Palm Ave # 9202 - Quarter at Ybor (3)

1910 E Palm Ave # 9202 - 1810 E Palm Ave, Tampa, FL, Hillsborough 33605

Unit Information

MLS Number:	T3483155
Status:	ACTIVE
Size:	867 Sq ft.
Bedrooms:	1
Full Bathrooms:	1
Half Bathrooms:	0
Parking Spaces:	
View:	
List Price:	\$259,000
List PPSF:	\$299
Valuated Price:	\$228,000
Valuated PPSF:	\$263

The above valuated price is a baseline figure that does not take into account any specific renovation, upgrade, split, merge, or deterioration of the unit.

Building Information

Number of units:	454
Number of active listings for rent:	0
Number of active listings for sale:	31
Building inventory for sale:	6%
Number of sales over the last 12 months:	30
Number of sales over the last 6 months:	2
Number of sales over the last 3 months:	0

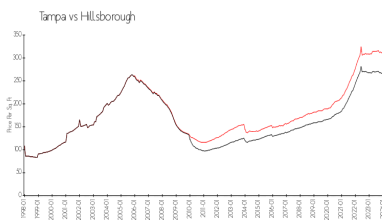
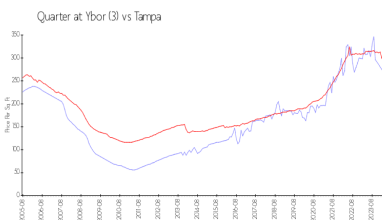
Building Association Information

THE QUARTER AT YBOR CONDOMINIUM ASSOCIATION, INC
 5125 Palm Springs Blvd #4104
 Tampa, FL, 33647 United States
 (813) 241-8383

Recent Sales

Unit #	Size	Closing Date	Sale Price	PPSF
11104	867 sq ft	Jan 2024	\$217,500	\$251
1316	598 sq ft	Nov 2023	\$235,000	\$393
11309	672 sq ft	Nov 2023	\$213,000	\$317
5311	672 sq ft	Nov 2023	\$196,000	\$292
4107	867 sq ft	Nov 2023	\$262,500	\$303

Market Information

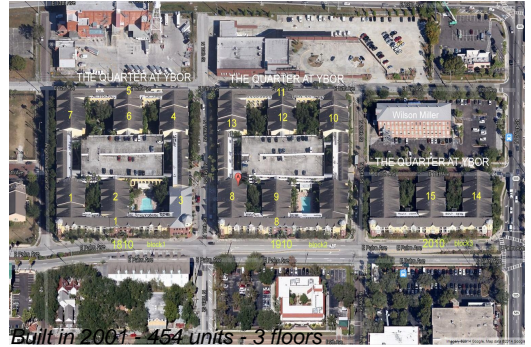


Quarter at Ybor (3): \$264/sq. ft.
 Tampa: \$312/sq. ft.

Tampa: \$312/sq. ft.
 Hillsborough: \$251/sq. ft.

Inventory for Sale

Quarter at Ybor (3)	7%
Tampa	2%
Hillsborough	2%



Avg. Time to Close Over Last 12 Months

Quarter at Ybor (3)	26 days
Tampa	42 days
Hillsborough	44 days