

Unit 8640 Tahoe Ct # 15 - Whisper Lake

8640 Tahoe Ct # 15 - 3801-3869 S Lake Dr, Tampa, FL, Hillsborough 33614

Unit Information

MLS Number:	T3496844
Status:	ACTIVE
Size:	1,077 Sq ft.
Bedrooms:	2
Full Bathrooms:	2
Half Bathrooms:	0
Parking Spaces:	
View:	
List Price:	\$159,000
List PPSF:	\$148
Valuated Price:	\$140,000
Valuated PPSF:	\$130

The above valuated price is a baseline figure that does not take into account any specific renovation, upgrade, split, merge, or deterioration of the unit.

Building Information

Number of units:	248
Number of active listings for rent:	0
Number of active listings for sale:	13
Building inventory for sale:	5%
Number of sales over the last 12 months:	17
Number of sales over the last 6 months:	8
Number of sales over the last 3 months:	2

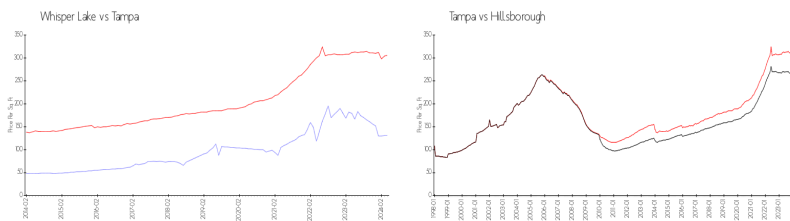
Building Association Information

Lake Whisper Condominium Association Inc
 3812 North Lake Drive
 Tampa, FL 33614
 Phone: (813) 968-5665

Recent Sales

Unit #	Size	Closing Date	Sale Price	PPSF
92	710 sq ft	Apr 2024	\$100,000	\$141
148	1,077 sq ft	Apr 2024	\$125,000	\$116
246	1,077 sq ft	Jan 2024	\$170,900	\$159
92	710 sq ft	Jan 2024	\$70,000	\$99
186	710 sq ft	Dec 2023	\$110,000	\$155
16	1,077 sq ft	Dec 2023	\$100,000	\$93
31	710 sq ft	Dec 2023	\$145,000	\$204

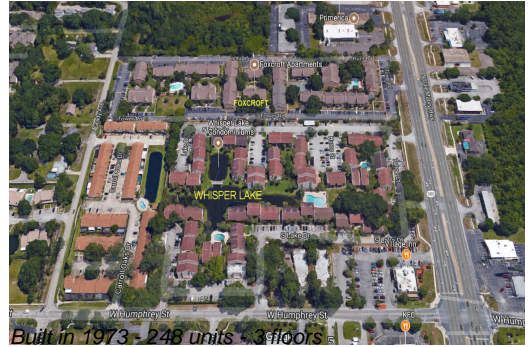
Market Information



Whisper Lake:	\$131/sq. ft.	Tampa:	\$306/sq. ft.
Tampa:	\$306/sq. ft.	Hillsborough:	\$249/sq. ft.

Inventory for Sale

Whisper Lake	5%
Tampa	2%
Hillsborough	2%



Avg. Time to Close Over Last 12 Months

Whisper Lake	49 days
Tampa	42 days
Hillsborough	44 days