

Unit 1502-T2 - Towers of Channelside 2

1502-T2 - 445 S 12th St, Tampa, FL, Hillsborough 33602

Unit Information

MLS Number: T3499831
 Status: ACTIVE
 Size: 1,338 Sq ft.
 Bedrooms: 2
 Full Bathrooms: 2
 Half Bathrooms: 1
 Parking Spaces: Assigned, Covered
 View: City, Pool, Water
 List Price: \$939,000
 List PPSF: \$702
 Valuated Price: \$816,000
 Valuated PPSF: \$700

The above valuated price is a baseline figure that does not take into account any specific renovation, upgrade, split, merge, or deterioration of the unit.

Building Information

Number of units: 139
 Number of active listings for rent: 0
 Number of active listings for sale: 4
 Building inventory for sale: 2%
 Number of sales over the last 12 months: 3
 Number of sales over the last 6 months: 2
 Number of sales over the last 3 months: 2

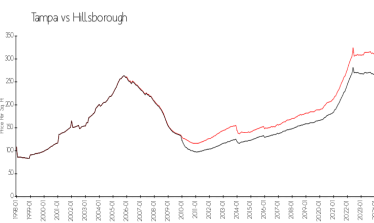
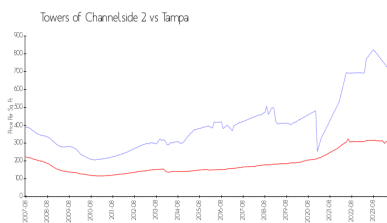
Building Association Information

Channelside Condo Assoc
 202 N 11th St
 Tampa, FL 33602
 (813) 223-3243

Recent Sales

Unit #	Size	Closing Date	Sale Price	PPSF
2304	1,767 sq ft	Mar 2024	\$1,000,000	\$566
804	1,363 sq ft	Mar 2024	\$810,000	\$594
1104	1,767 sq ft	Aug 2023	\$1,200,000	\$679

Market Information

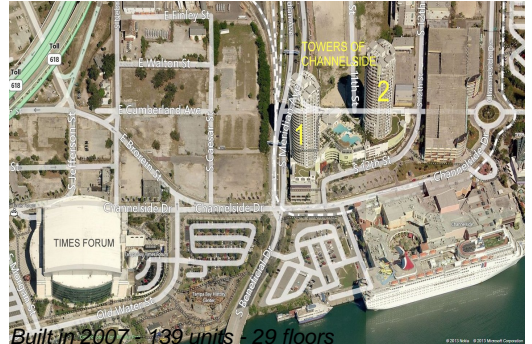


Towers of Channelside 2:	\$720/sq. ft.	Tampa:	\$312/sq. ft.
Tampa:	\$312/sq. ft.	Hillsborough:	\$251/sq. ft.

Inventory for Sale

Towers of Channelside 2: 3%
 Tampa: 2%
 Hillsborough: 2%

Avg. Time to Close Over Last 12 Months



Towers of Channelside 2
Tampa
Hillsborough

83 days
42 days
44 days