

Unit 1810 E Palm Ave # 5307 - Quarter at Ybor (3)

1810 E Palm Ave # 5307 - 1810 E Palm Ave, Tampa, FL, Hillsborough 33605

Unit Information

| | |
|-----------------|--|
| MLS Number: | T3502435 |
| Status: | ACTIVE |
| Size: | 1,146 Sq ft. |
| Bedrooms: | 2 |
| Full Bathrooms: | 2 |
| Half Bathrooms: | 0 |
| Parking Spaces: | Assigned, Covered, On Street, Reserved |
| View: | City |
| List Price: | \$339,900 |
| List PPSF: | \$297 |
| Valuated Price: | \$305,000 |
| Valuated PPSF: | \$266 |

The above valuated price is a baseline figure that does not take into account any specific renovation, upgrade, split, merge, or deterioration of the unit.

Building Information

| | |
|--|-----|
| Number of units: | 454 |
| Number of active listings for rent: | 0 |
| Number of active listings for sale: | 31 |
| Building inventory for sale: | 6% |
| Number of sales over the last 12 months: | 31 |
| Number of sales over the last 6 months: | 2 |
| Number of sales over the last 3 months: | 0 |

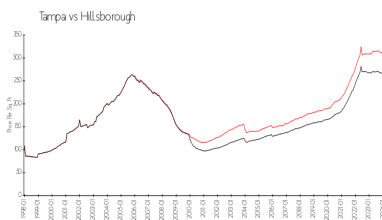
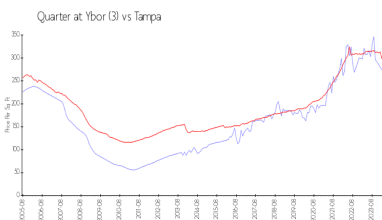
Building Association Information

THE QUARTER AT YBOR CONDOMINIUM ASSOCIATION, INC
 5125 Palm Springs Blvd #4104
 Tampa, FL, 33647 United States
 (813) 241-8383

Recent Sales

| Unit # | Size | Closing Date | Sale Price | PPSF |
|--------|-----------|--------------|------------|-------|
| 11104 | 867 sq ft | Jan 2024 | \$217,500 | \$251 |
| 1316 | 598 sq ft | Nov 2023 | \$235,000 | \$393 |
| 11309 | 672 sq ft | Nov 2023 | \$213,000 | \$317 |
| 5311 | 672 sq ft | Nov 2023 | \$196,000 | \$292 |
| 4107 | 867 sq ft | Nov 2023 | \$262,500 | \$303 |

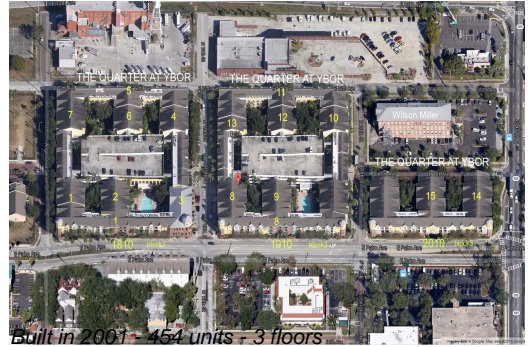
Market Information



| | | | |
|----------------------|---------------|---------------|---------------|
| Quarter at Ybor (3): | \$264/sq. ft. | Tampa: | \$312/sq. ft. |
| Tampa: | \$312/sq. ft. | Hillsborough: | \$251/sq. ft. |

Inventory for Sale

| | |
|---------------------|----|
| Quarter at Ybor (3) | 7% |
| Tampa | 2% |
| Hillsborough | 2% |



Avg. Time to Close Over Last 12 Months

| | |
|---------------------|---------|
| Quarter at Ybor (3) | 26 days |
| Tampa | 42 days |
| Hillsborough | 44 days |