

Unit 6212 Bayside Key Dr - Bayside Key

6212 Bayside Key Dr - 5907-6373 Bayside Key Dr, Tampa, FL, Hillsborough 33615

Unit Information

| | |
|-----------------|--------------|
| MLS Number: | T3503349 |
| Status: | ACTIVE |
| Size: | 1,184 Sq ft. |
| Bedrooms: | 2 |
| Full Bathrooms: | 2 |
| Half Bathrooms: | 1 |
| Parking Spaces: | |
| View: | |
| List Price: | \$244,000 |
| List PPSF: | \$206 |
| Valuated Price: | \$242,000 |
| Valuated PPSF: | \$204 |

The above valuated price is a baseline figure that does not take into account any specific renovation, upgrade, split, merge, or deterioration of the unit.

Building Information

| | |
|--|-----|
| Number of units: | 142 |
| Number of active listings for rent: | 0 |
| Number of active listings for sale: | 2 |
| Building inventory for sale: | 1% |
| Number of sales over the last 12 months: | 6 |
| Number of sales over the last 6 months: | 1 |
| Number of sales over the last 3 months: | 0 |

Building Association Information

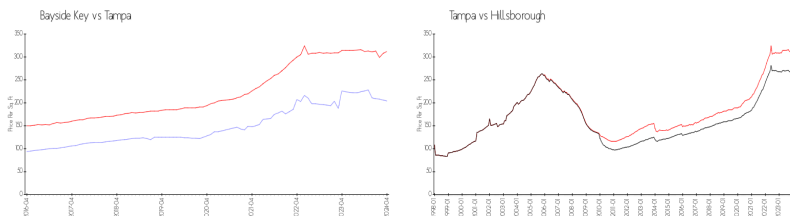
Bayside Key HOA
Telephone : 813-968-8008

<http://baysidekeyhoa.com/>

Recent Sales

| Unit # | Size | Closing Date | Sale Price | PPSF |
|--------|-------------|--------------|------------|-------|
| | 1,184 sq ft | Dec 2023 | \$250,000 | \$211 |
| | 1,184 sq ft | Nov 2023 | \$239,000 | \$202 |
| | 1,312 sq ft | Nov 2023 | \$300,000 | \$229 |
| | 1,184 sq ft | Aug 2023 | \$274,500 | \$232 |
| | 1,184 sq ft | Aug 2023 | \$267,000 | \$226 |

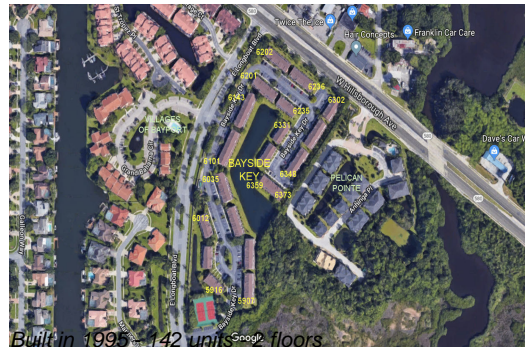
Market Information



| | | | |
|--------------|---------------|---------------|---------------|
| Bayside Key: | \$204/sq. ft. | Tampa: | \$312/sq. ft. |
| Tampa: | \$312/sq. ft. | Hillsborough: | \$251/sq. ft. |

Inventory for Sale

| | |
|--------------|----|
| Bayside Key | 1% |
| Tampa | 1% |
| Hillsborough | 1% |



Avg. Time to Close Over Last 12 Months

| | |
|--------------|---------|
| Bayside Key | 21 days |
| Tampa | 42 days |
| Hillsborough | 44 days |