

Unit 1326 Emerald Dunes Dr # 38 - Toscana at Renaissance

1326 Emerald Dunes Dr # 38 - 1310-1373 Emerald Dunes Dr, Sun City Center, FL, Hillsborough 33573

Unit Information

MLS Number: T3507755
 Status: ACTIVE
 Size: 1,860 Sq ft.
 Bedrooms: 3
 Full Bathrooms: 2
 Half Bathrooms: 0
 Parking Spaces:
 View:
 Rental Price: \$2,200
 List PPSF: \$1
 Valuated Price: \$315,000
 Valuated PPSF: \$169

The above valuated price is a baseline figure that does not take into account any specific renovation, upgrade, split, merge, or deterioration of the unit.

Building Information

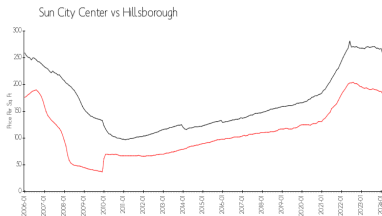
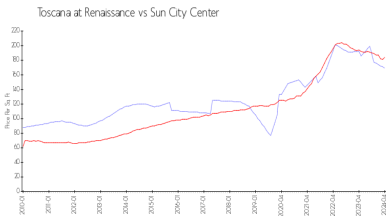
Number of units: 52
 Number of active listings for rent: 0
 Number of active listings for sale: 3
 Building inventory for sale: 5%
 Number of sales over the last 12 months: 4
 Number of sales over the last 6 months: 1
 Number of sales over the last 3 months: 1

Building Association Information

Sun City Center Community Association
 1009 North Pebble Beach Blv
 Sun City Center
 Ph: 813-633-3500
 URL: <http://www.suncitycenter.org/association.html>

Kings Point Community
 1904 Clubhouse Dr
 Sun City Center
 Ph: 813-642-8790
 URL: <http://kpscc.com/>

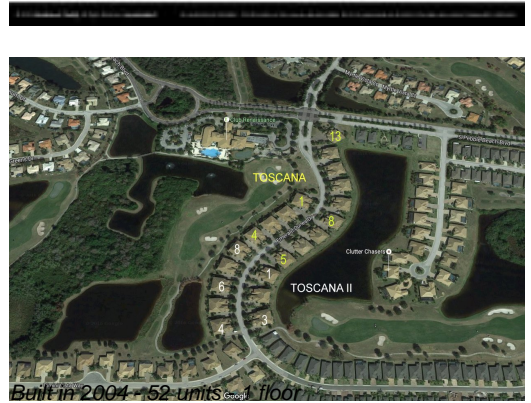
Market Information



Toscana at Renaissance:	\$169/sq. ft.	Sun City Center:	\$184/sq. ft.
Sun City Center:	\$184/sq. ft.	Hillsborough:	\$251/sq. ft.

Inventory for Sale

Toscana at Renaissance: 6%
 Sun City Center: 2%
 Hillsborough: 1%



Avg. Time to Close Over Last 12 Months

Toscana at Renaissance	118 days
Sun City Center	54 days
Hillsborough	44 days