

# Unit 408 S Arrawana Ave # C3 - Audubon Park Homes of Tampa

408 S Arrawana Ave # C3 - 407-409 S Audubon Ave, Tampa, FL, Hillsborough 33609

## Unit Information

MLS Number:	T3508661
Status:	CLOSED
Size:	1,122 Sq ft.
Bedrooms:	2
Full Bathrooms:	1
Half Bathrooms:	1
Parking Spaces:	
View:	
List Price:	\$435,000
List PPSF:	\$388
Valuated Price:	\$362,000
Valuated PPSF:	\$323

The above valuated price is a baseline figure that does not take into account any specific renovation, upgrade, split, merge, or deterioration of the unit.

## Building Information

Number of units:	25
Number of active listings for rent:	0
Number of active listings for sale:	0
Building inventory for sale:	0%
Number of sales over the last 12 months:	2
Number of sales over the last 6 months:	2
Number of sales over the last 3 months:	1

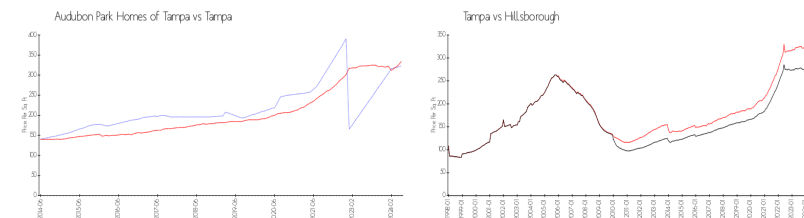
## Building Association Information

AUDUBON PARK HOMES OF TAMPA  
CONDOMINIUM ASSOCIATION, INC  
Addresses:  
PO Box 10217, Tampa, FL 33679  
408 S Arrawana Ave, Tampa, FL 33609  
807 W Platt St, Tampa, FL 33606

## Recent Sales

Unit #	Size	Closing Date	Sale Price	PPSF
C3	1,122 sq ft	Jun 2024	\$415,000	\$370
A3	1,122 sq ft	Feb 2024	\$395,000	\$352

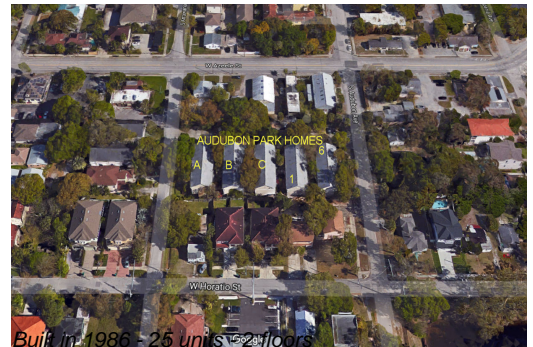
## Market Information



Audubon Park Homes of Tampa:	\$323/sq. ft.	Tampa:	\$334/sq. ft.
Tampa:	\$334/sq. ft.	Hillsborough:	\$261/sq. ft.

## Inventory for Sale

Audubon Park Homes of Tampa	0%
Tampa	2%
Hillsborough	2%



**Avg. Time to Close Over Last 12 Months**

Audubon Park Homes of Tampa	75 days
Tampa	44 days
Hillsborough	45 days