

# Unit 831 - Enclave at Richmond Place

831 - 18001 Richmond Place Dr, Tampa, FL, Hillsborough 33647

## Unit Information

MLS Number: T3508801  
 Status: PENDING  
 Size: 1,083 Sq ft.  
 Bedrooms: 2  
 Full Bathrooms: 2  
 Half Bathrooms: 0  
 Parking Spaces:  
 View:  
 Rental Price: \$1,495  
 List PPSF: \$1  
 Valuated Price: \$211,000  
 Valuated PPSF: \$195

*The above valuated price is a baseline figure that does not take into account any specific renovation, upgrade, split, merge, or deterioration of the unit.*

## Building Information

Number of units: 280  
 Number of active listings for rent: 0  
 Number of active listings for sale: 10  
 Building inventory for sale: 3%  
 Number of sales over the last 12 months: 7  
 Number of sales over the last 6 months: 3  
 Number of sales over the last 3 months: 2

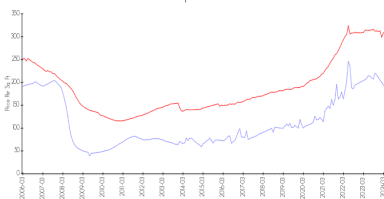
## Building Association Information

THE ENCLAVE AT RICHMOND PLACE  
 Property Management company  
 University Properties Inc  
 7001 Temple Terrace Hwy  
 Tampa, FL 33637-5734  
 (813) 980-1000

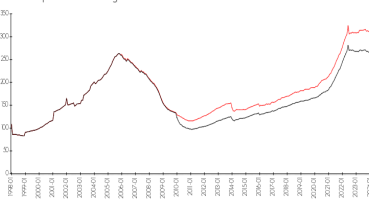
<http://www.richmondplacetampa.com/>

## Market Information

Enclave at Richmond Place vs Tampa



Tampa vs Hillsborough



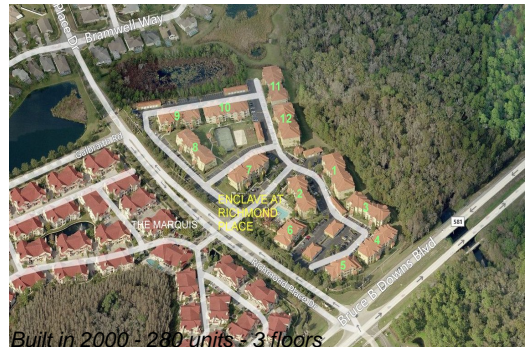
Enclave at Richmond Place: \$190/sq. ft.  
 Tampa: \$312/sq. ft.  
 Hillsborough: \$251/sq. ft.

## Inventory for Sale

Enclave at Richmond Place: 4%  
 Tampa: 2%  
 Hillsborough: 2%

## Avg. Time to Close Over Last 12 Months

Enclave at Richmond Place: 45 days  
 Tampa: 43 days



Hillsborough

44 days