

Unit 123 - Enclave at Richmond Place

123 - 18001 Richmond Place Dr, Tampa, FL, Hillsborough 33647

Unit Information

MLS Number: T3510196
 Status: ACTIVE
 Size: 1,083 Sq ft.
 Bedrooms: 2
 Full Bathrooms: 2
 Half Bathrooms: 0
 Parking Spaces:
 View:
 List Price: \$219,900
 List PPSF: \$203
 Valuated Price: \$225,000
 Valuated PPSF: \$208

The above valuated price is a baseline figure that does not take into account any specific renovation, upgrade, split, merge, or deterioration of the unit.

Building Information

Number of units: 280
 Number of active listings for rent: 0
 Number of active listings for sale: 9
 Building inventory for sale: 3%
 Number of sales over the last 12 months: 7
 Number of sales over the last 6 months: 4
 Number of sales over the last 3 months: 2

Building Association Information

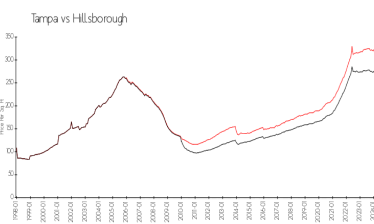
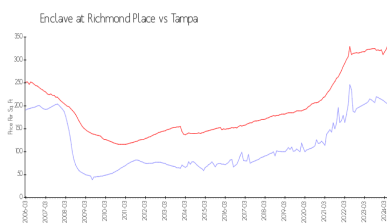
THE ENCLAVE AT RICHMOND PLACE
 Property Management company
 University Properties Inc
 7001 Temple Terrace Hwy
 Tampa, FL 33637-5734
 (813) 980-1000

<http://www.richmondplacetampa.com/>

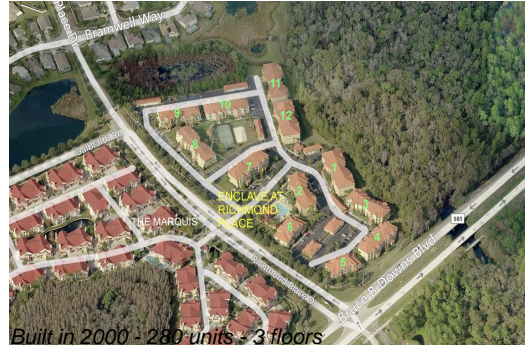
Recent Sales

Unit #	Size	Closing Date	Sale Price	PPSF
920	1,083 sq ft	Jun 2024	\$210,000	\$194
113	1,083 sq ft	May 2024	\$242,000	\$223
330	732 sq ft	Mar 2024	\$143,000	\$195
225	732 sq ft	Jan 2024	\$180,000	\$246
337	1,083 sq ft	Oct 2023	\$233,000	\$215
1127	825 sq ft	Oct 2023	\$185,000	\$224

Market Information



Enclave at Richmond Place: \$205/sq. ft.
 Tampa: \$334/sq. ft.
 Hillsborough: \$261/sq. ft.



Inventory for Sale

Enclave at Richmond Place	3%
Tampa	2%
Hillsborough	2%

Avg. Time to Close Over Last 12 Months

Enclave at Richmond Place	45 days
Tampa	45 days
Hillsborough	46 days