

Unit 206 Islip Way # 15A - St George A-B&C

206 Islip Way # 15A - 1301-1359 New Bedford Dr, Sun City Center, FL, Hillsborough 33573

Unit Information

MLS Number: T3510689
 Status: ACTIVE
 Size: 984 Sq ft.
 Bedrooms: 2
 Full Bathrooms: 2
 Half Bathrooms: 0
 Parking Spaces:
 View:
 List Price: \$209,000
 List PPSF: \$212
 Valuated Price: \$209,000
 Valuated PPSF: \$212

The above valuated price is a baseline figure that does not take into account any specific renovation, upgrade, split, merge, or deterioration of the unit.

Building Information

Number of units: 62
 Number of active listings for rent: 0
 Number of active listings for sale: 2
 Building inventory for sale: 3%
 Number of sales over the last 12 months: 7
 Number of sales over the last 6 months: 3
 Number of sales over the last 3 months: 2

Building Association Information

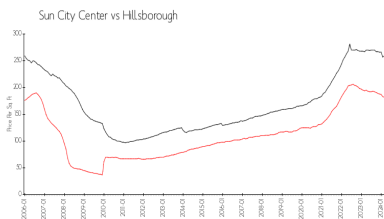
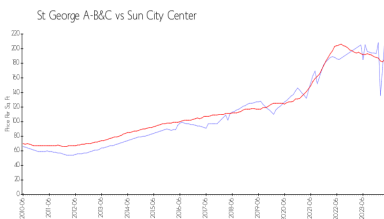
Sun City Center Community Association
 1009 North Pebble Beach Blv
 Sun City Center
 Ph: 813-633-3500
 URL: <http://www.suncitycenter.org/association.html>

Kings Point Community
 1904 Clubhouse Dr
 Sun City Center
 Ph: 813-642-8790
 URL: <http://kpscc.com/>

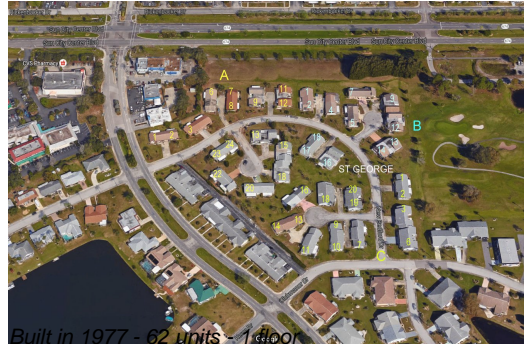
Recent Sales

Unit #	Size	Closing Date	Sale Price	PPSF
	992 sq ft	Apr 2024	\$203,500	\$205
6	992 sq ft	Feb 2024	\$135,000	\$136
1303	984 sq ft	Jan 2024	\$205,000	\$208
102	984 sq ft	Aug 2023	\$170,000	\$173
13	984 sq ft	Aug 2023	\$215,000	\$218

Market Information



St George A-B&C: \$212/sq. ft.
 Sun City Center: \$185/sq. ft.
 Sun City Center: \$185/sq. ft.
 Hillsborough: \$249/sq. ft.



Inventory for Sale

St George A-B&C	3%
Sun City Center	3%
Hillsborough	2%

Avg. Time to Close Over Last 12 Months

St George A-B&C	48 days
Sun City Center	53 days
Hillsborough	43 days