

Unit 1033 - Enclave at Richmond Place

1033 - 18001 Richmond Place Dr, Tampa, FL, Hillsborough 33647

Unit Information

MLS Number: T3510938
 Status: ACTIVE
 Size: 1,083 Sq ft.
 Bedrooms: 2
 Full Bathrooms: 2
 Half Bathrooms: 0
 Parking Spaces: Common, Curb Parking
 View:
 Rental Price: \$1,700
 List PPSF: \$2
 Valuated Price: \$201,000
 Valuated PPSF: \$186

The above valuated price is a baseline figure that does not take into account any specific renovation, upgrade, split, merge, or deterioration of the unit.

Building Information

Number of units: 280
 Number of active listings for rent: 0
 Number of active listings for sale: 10
 Building inventory for sale: 3%
 Number of sales over the last 12 months: 7
 Number of sales over the last 6 months: 3
 Number of sales over the last 3 months: 2

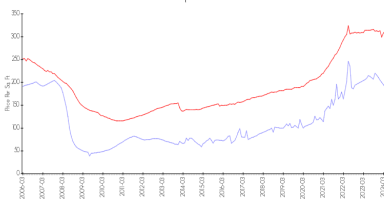
Building Association Information

THE ENCLAVE AT RICHMOND PLACE
 Property Management company
 University Properties Inc
 7001 Temple Terrace Hwy
 Tampa, FL 33637-5734
 (813) 980-1000

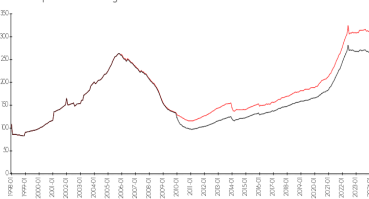
<http://www.richmondplacetampa.com/>

Market Information

Enclave at Richmond Place vs Tampa



Tampa vs Hillsborough



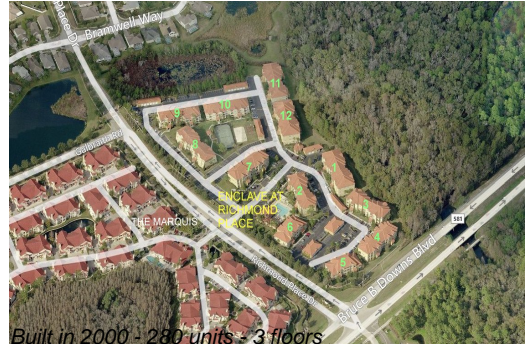
Enclave at Richmond Place: \$190/sq. ft.
 Tampa: \$312/sq. ft.
 Hillsborough: \$251/sq. ft.

Inventory for Sale

Enclave at Richmond Place: 4%
 Tampa: 2%
 Hillsborough: 2%

Avg. Time to Close Over Last 12 Months

Enclave at Richmond Place: 45 days
 Tampa: 43 days



Hillsborough

44 days