

Unit 1212 - Villa Sonoma at International Plaza

1212 - 4221 W Spruce St, Tampa, FL, Hillsborough 33607

Unit Information

MLS Number:	T3516791
Status:	ACTIVE
Size:	1,080 Sq ft.
Bedrooms:	2
Full Bathrooms:	2
Half Bathrooms:	0
Parking Spaces:	
View:	
List Price:	\$299,000
List PPSF:	\$277
Valuated Price:	\$302,000
Valuated PPSF:	\$280

The above valuated price is a baseline figure that does not take into account any specific renovation, upgrade, split, merge, or deterioration of the unit.

Building Information

Number of units:	240
Number of active listings for rent:	0
Number of active listings for sale:	12
Building inventory for sale:	5%
Number of sales over the last 12 months:	26
Number of sales over the last 6 months:	18
Number of sales over the last 3 months:	7

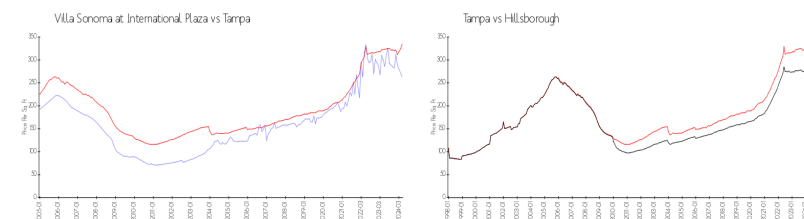
Building Association Information

Villa Sonoma At International Plaza Condominium Association, Inc
4221 W Spruce Street Tampa, FL 33607
Phone: (813) 877-8899

Recent Sales

Unit #	Size	Closing Date	Sale Price	PPSF
2402	800 sq ft	May 2024	\$244,000	\$305
2224	792 sq ft	May 2024	\$232,000	\$293
2323	696 sq ft	Apr 2024	\$225,000	\$323
2109	800 sq ft	Apr 2024	\$229,000	\$286
2407	1,447 sq ft	Apr 2024	\$440,000	\$304
2312	992 sq ft	Apr 2024	\$300,000	\$302
1321	696 sq ft	Apr 2024	\$245,000	\$352

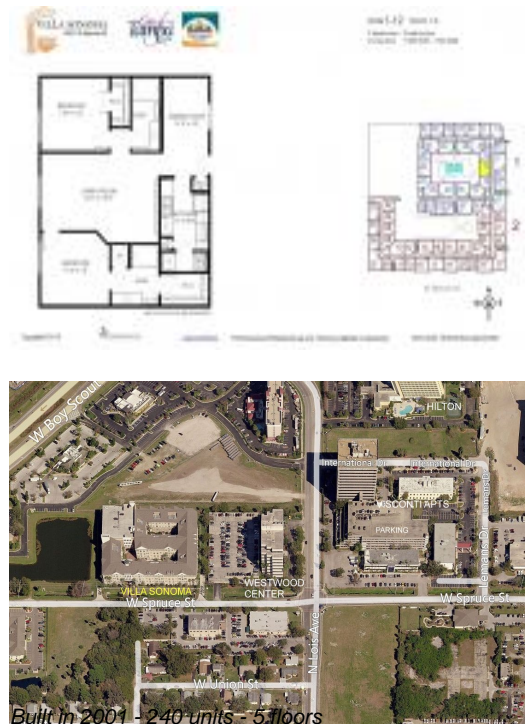
Market Information



Villa Sonoma at International Plaza:	\$263/sq. ft.	Tampa:	\$334/sq. ft.
Tampa:	\$334/sq. ft.	Hillsborough:	\$261/sq. ft.

Inventory for Sale

Villa Sonoma at International Plaza	5%
-------------------------------------	----



Tampa	2%
Hillsborough	2%

Avg. Time to Close Over Last 12 Months

Villa Sonoma at International Plaza	52 days
Tampa	44 days
Hillsborough	45 days