

Unit 409 - Grand Central at Kennedy East

409 - 1208 E Kennedy Blvd, Tampa, FL, Hillsborough 33602

Unit Information

MLS Number: T3516982
 Status: ACTIVE
 Size: 1,050 Sq ft.
 Bedrooms: 2
 Full Bathrooms: 1
 Half Bathrooms: 0
 Parking Spaces:
 View: City
 List Price: \$433,000
 List PPSF: \$412
 Valuated Price: \$390,000
 Valuated PPSF: \$371

The above valuated price is a baseline figure that does not take into account any specific renovation, upgrade, split, merge, or deterioration of the unit.

Building Information

Number of units: 176
 Number of active listings for rent: 0
 Number of active listings for sale: 11
 Building inventory for sale: 6%
 Number of sales over the last 12 months: 13
 Number of sales over the last 6 months: 6
 Number of sales over the last 3 months: 2

Building Association Information

Grand Central At Kennedy Association
 1120 E Kennedy Blvd #208,
 Tampa, FL 33602 (813) 226-0991

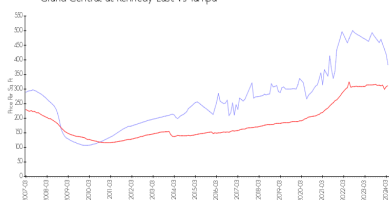
<http://grandcentralatkennedy.com/>

Recent Sales

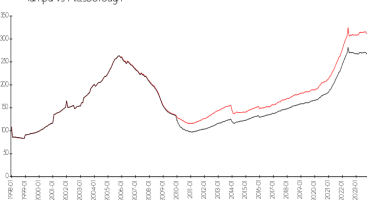
Unit #	Size	Closing Date	Sale Price	PPSF
1009	1,050 sq ft	Apr 2024	\$410,000	\$390
417	1,320 sq ft	Feb 2024	\$715,000	\$542
927	1,050 sq ft	Jan 2024	\$499,900	\$476
927	840 sq ft	Dec 2023	\$370,000	\$440
410	2,169 sq ft	Dec 2023	\$1,027,000	\$473

Market Information

Grand Central at Kennedy East vs Tampa



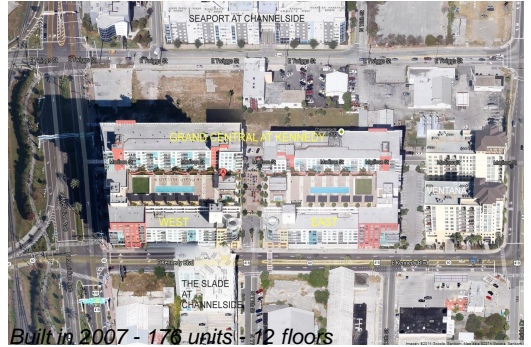
Tampa vs Hillsborough



Grand Central at Kennedy East: \$382/sq. ft.
 Tampa: \$312/sq. ft.
 Tampa: \$312/sq. ft.
 Hillsborough: \$251/sq. ft.

Inventory for Sale

Grand Central at Kennedy East: 6%
 Tampa: 2%



Hillsborough

2%

Avg. Time to Close Over Last 12 Months

Grand Central at Kennedy East	41 days
Tampa	42 days
Hillsborough	44 days