

# Unit 4714 Chatterton Way - Magnolia Park Central

4714 Chatterton Way - 4603-4733 Sommerset Hill Ln, Riverview, FL, Hillsborough 33578

## Unit Information

MLS Number: T3519050  
 Status: ACTIVE  
 Size: 1,280 Sq ft.  
 Bedrooms: 2  
 Full Bathrooms: 2  
 Half Bathrooms: 1  
 Parking Spaces: Assigned, Guest  
 View:  
 Rental Price: \$1,850  
 List PPSF: \$1  
 Valuated Price: \$242,000  
 Valuated PPSF: \$189

*The above valuated price is a baseline figure that does not take into account any specific renovation, upgrade, split, merge, or deterioration of the unit.*

## Building Information

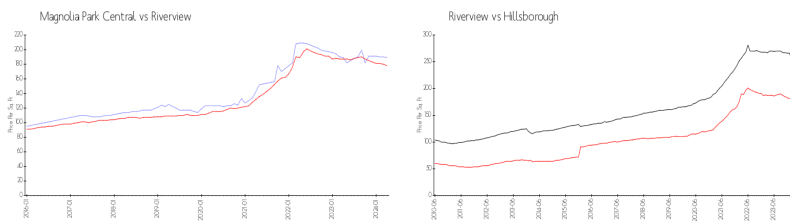
Number of units: 108  
 Number of active listings for rent: 0  
 Number of active listings for sale: 4  
 Building inventory for sale: 3%  
 Number of sales over the last 12 months: 11  
 Number of sales over the last 6 months: 6  
 Number of sales over the last 3 months: 4

## Building Association Information

Magnolia Park @ Riverview  
 Homeowners Association  
 9203 Sienna Moss Ln,  
 Riverview, FL 33578  
 (813) 671-6500

[https://www.lelandmanagement.com/community\\_sessions/login/803](https://www.lelandmanagement.com/community_sessions/login/803)

## Market Information

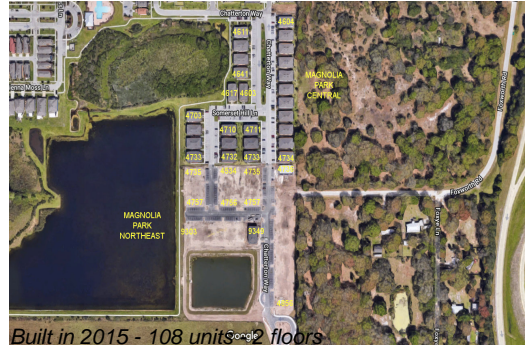


Magnolia Park Central:	\$189/sq. ft.	Riverview:	\$178/sq. ft.
Riverview:	\$178/sq. ft.	Hillsborough:	\$249/sq. ft.

## Inventory for Sale

Magnolia Park Central: 4%  
 Riverview: 2%  
 Hillsborough: 2%

## Avg. Time to Close Over Last 12 Months



Magnolia Park Central  
Riverview  
Hillsborough

20 days  
44 days  
43 days